



RADIAL CEMENT BOND LOG

File No:	Company ENERGY WORKS CANADA.									
LSD.	Well STRATEGIC HB ET AL CAMERON J-62 60 10N 117 15W									
SEC.	Field CAMERON HILLS									
TWP.	Province NWT Country CANADA									
RGE.	Surface Location J-62 60 10N 117 15W License 0001158 Other Services:									
WEST	LSD. SEC. TWP. RGE W. Elev K.B. 751.9 755.0									
Permanent Datum GROUND LEVEL Elevation 751.9										
Log Meas. From KELLY BUSHING M. Above Datum 3.1 Elev D.F.										
Drilling Meas. From KELLY BUSHING Elev G.L. 751.9										
Date	MARCH 12, 2020									
Run No	ONE									
Type Log	CCL-GR-RCBL									
Depth Driller (OH)	1605.0									
Depth Driller (CH)	1605.0									
Depth Logged (P.BTD)	1340.0									
Bottom Log Interval	1340.0									
Top Log Interval	SURFACE									
Fluid Type	H2O									
Fluid Level	15.0									
Wellhead Pressure (KPa)	DEAD									
Max. Temp. (°C)	40°C									
Truck # / Location	#512/ RED DEER									
Recorded By	TYLER SALMON									
Witnessed By	MIKE GREENWOOD									
Casing Record	Size (mm) Weight (Kg/m) Top Bottom									
Surface Casing	244.5 48.1 SURFACE 524.0									
Production Casing	139.7 23.1 SURFACE 1605.0									

Bridge Plug	Size (mm)	Type	Model	Depth
Cement Retainer				
Packer				
Invoice #	512-200312-1			
Reference Literature	NO REFERENCE LITERATURE. TOOL REFERENCED TO KB AND SURFACE CASING SHOE.			
Remarks: LOGGED AS PER CUSTOMER REQUEST.				
TAGGED 1340.0mKB POSSIBLE CEMENT STRINGER.				
CEMENT DATA:				
SURFACE CSG CEMENTED 40 TONNES 0:1:0 G + 3.0%CaCl2. NO CEMENT RETURNS TO SURFACE.				
PRODUCTION CASING CEMENTED 35 TONNES 1:1:2 + 4% KCL. FULL MUD RETURNS DURING JOB. NO MENTION OF CEMENT RETURNS.				
All interpretations are opinions based on inferences from electrical or other measurements and we cannot, and do not guarantee the accuracy or correctness of any interpretations, and we shall not, except in the case of gross or willful negligence on our part, be liable or responsible for any loss, costs, damages or expenses incurred or sustained by anyone resulting from any interpretation made by any of our officers, agents, or employees. These interpretations are also subject to our general terms and conditions as set out in our current price schedule.				

Tool String Configuration

Max. Length: 7.52 m

Cable Head

Length: 0.34 m Max Diameter: 42.90 mm

Bow Spring

Length: 0.66 m Max Diameter: 69.85 mm

CCL-GR

Length: 1.88 m Max Diameter: 69.85 mm

Bow Spring

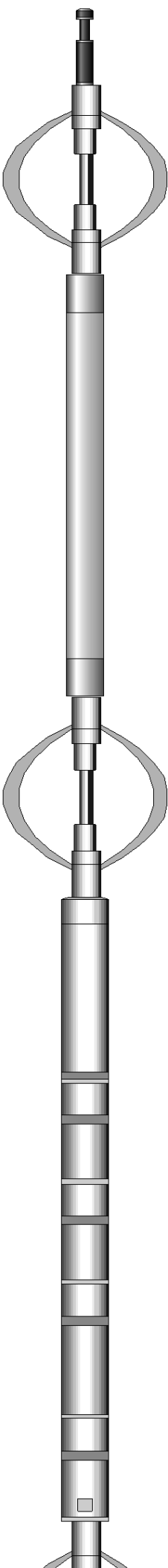
Length: 0.89 m Max Diameter: 69.85 mm

Applied RIB CBL

Length: 2.78 m Max Diameter: 69.85 mm

Bow Spring

With bull plug



-1.41 m Top of String

0.00 m - CCL

1.04 m - GammaRay

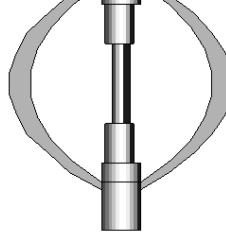
3.36 m - Transmitter

3.82 m - RIB Receivers

4.28 m - 3 ft. Receiver

4.89 m - 5 ft. Receiver

With bull plug
Length: 0.97 m Max Diameter: 69.85 mm



6.11 m Bottom of String

MAIN PASS @ 0mPA

2020-03-12 09:52

Tension (lbF)

METERS

1:240

3 Foot Amplitude (mV)

VDL (μs)

Minimum Amplitude (mV)

Cement Map (mV)

0 100

200.00 1200.00

0 100

0.00 100.00

AmplitudeX5 (mV)

Maximum Amplitude (mV)

0 20

0 100

Transit Time (μs)

Average Amplitude (mV)

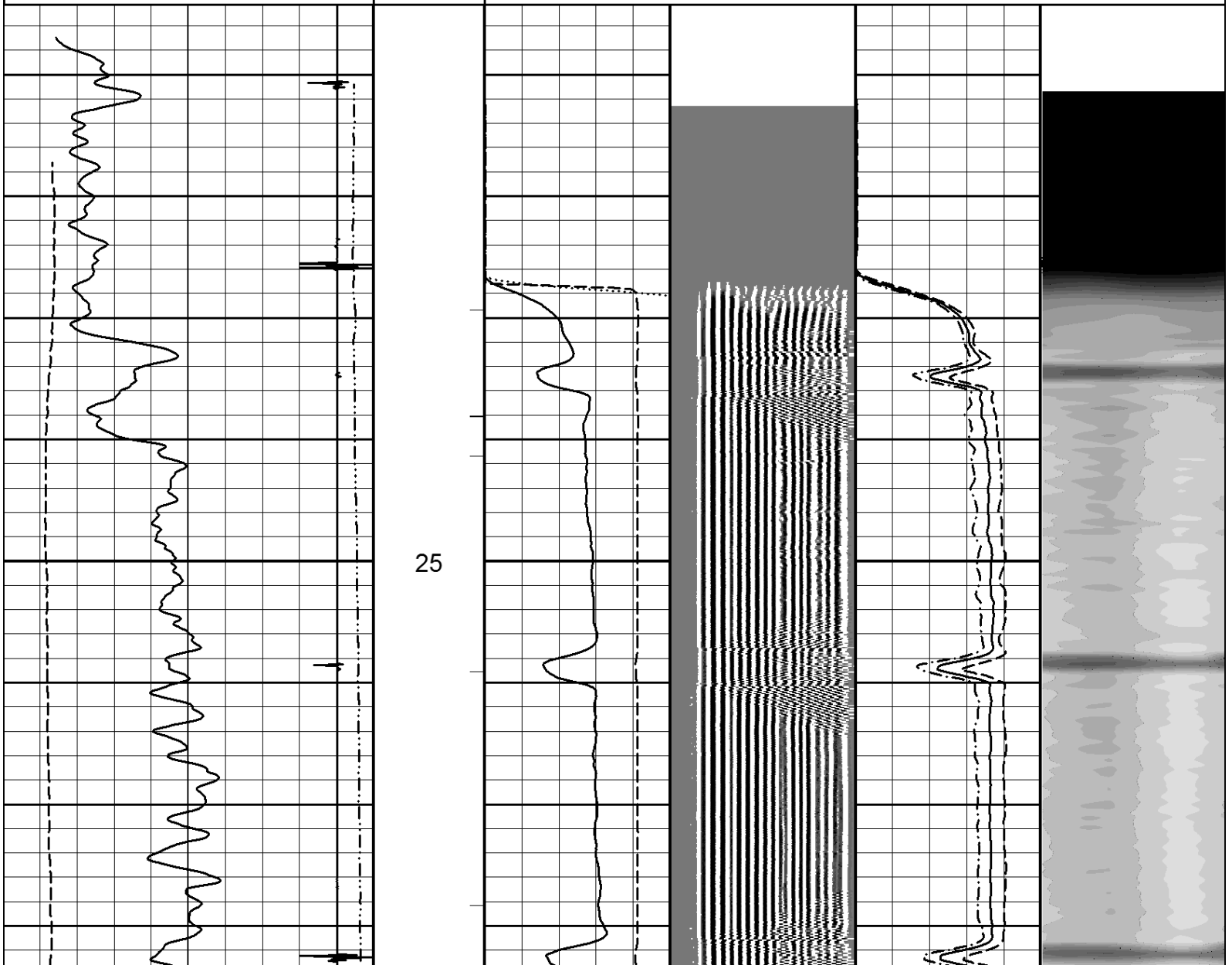
650 150

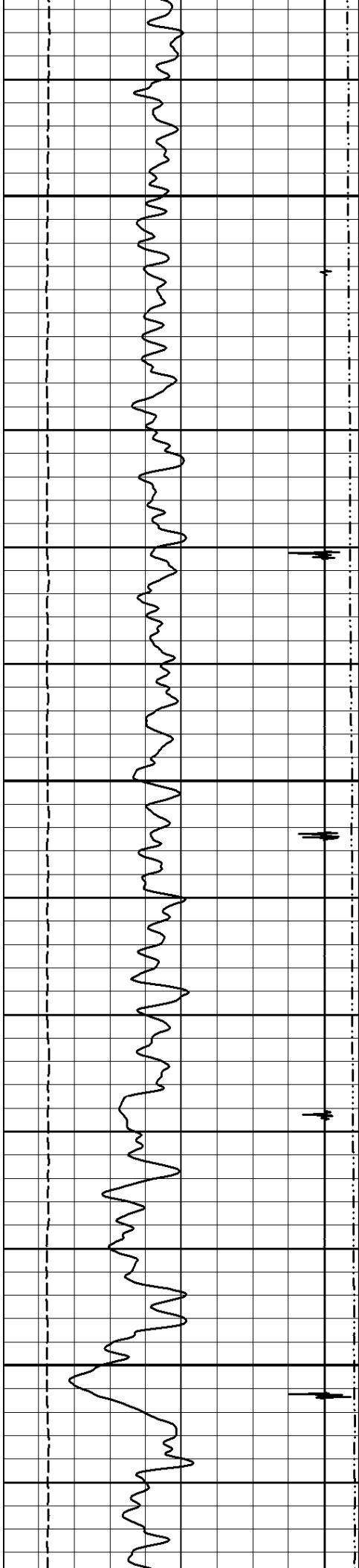
0 100

Logging Up
Shutin

File MAIN PASSEdit.pre

Rev. 2017.06.07

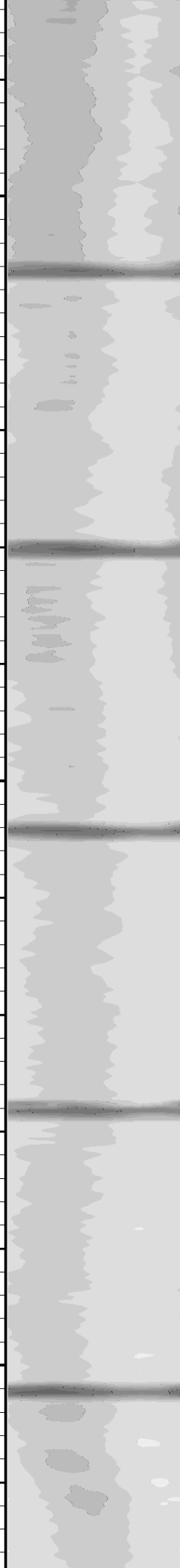
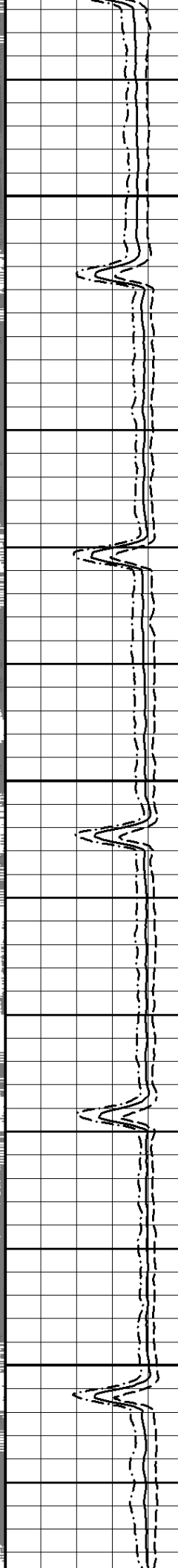
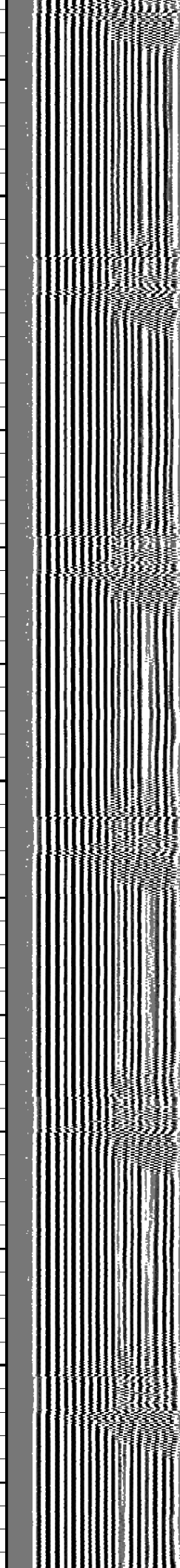
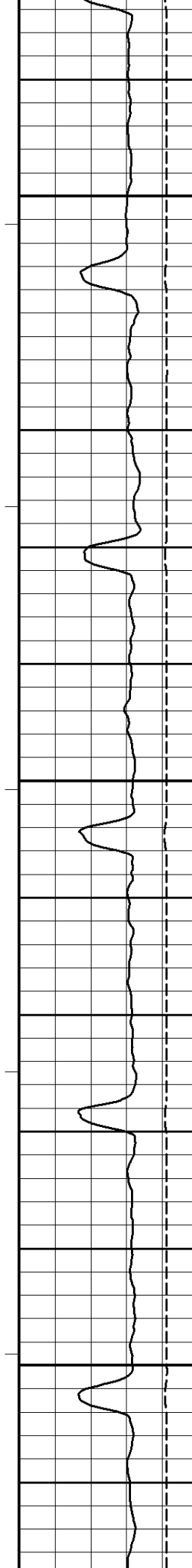


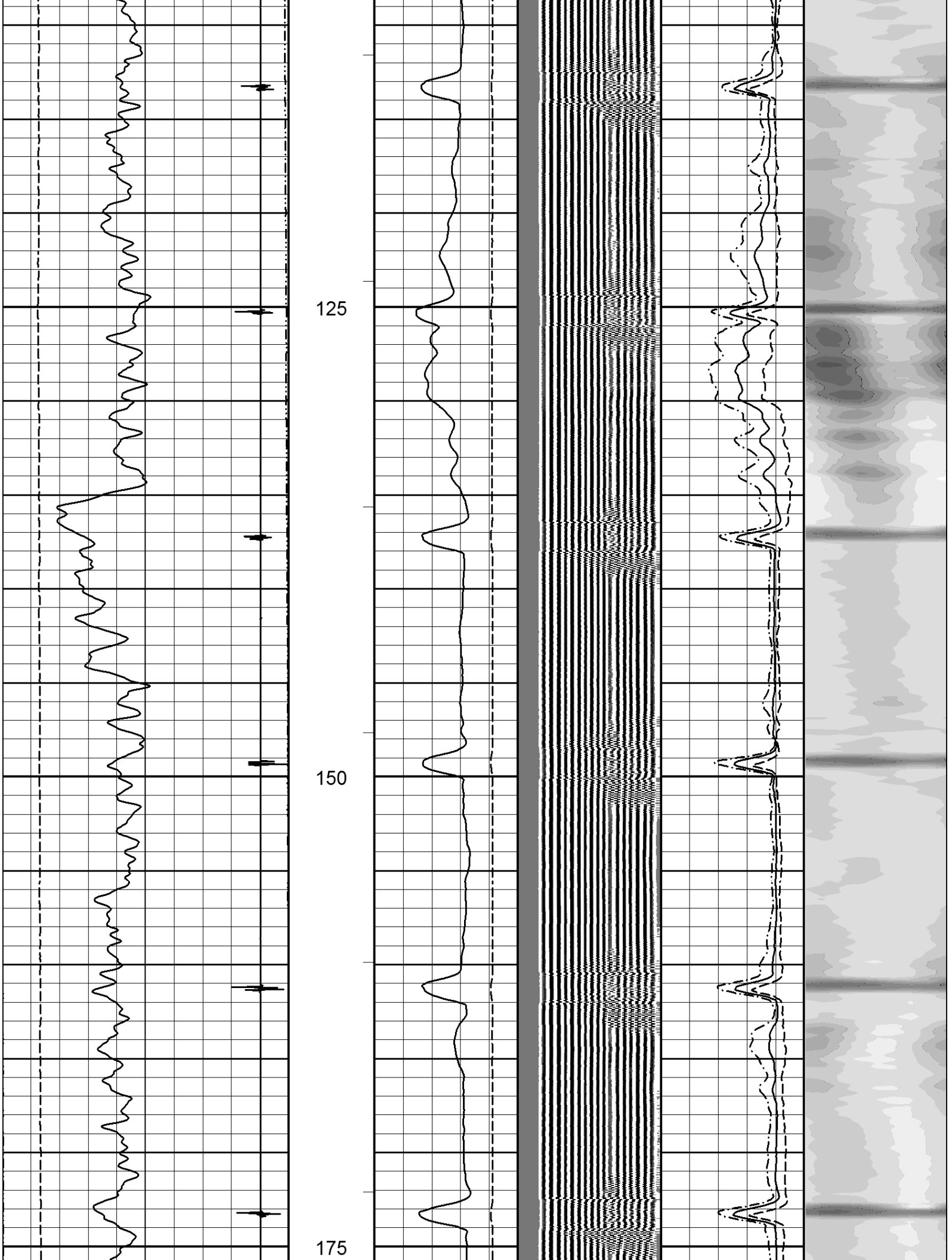


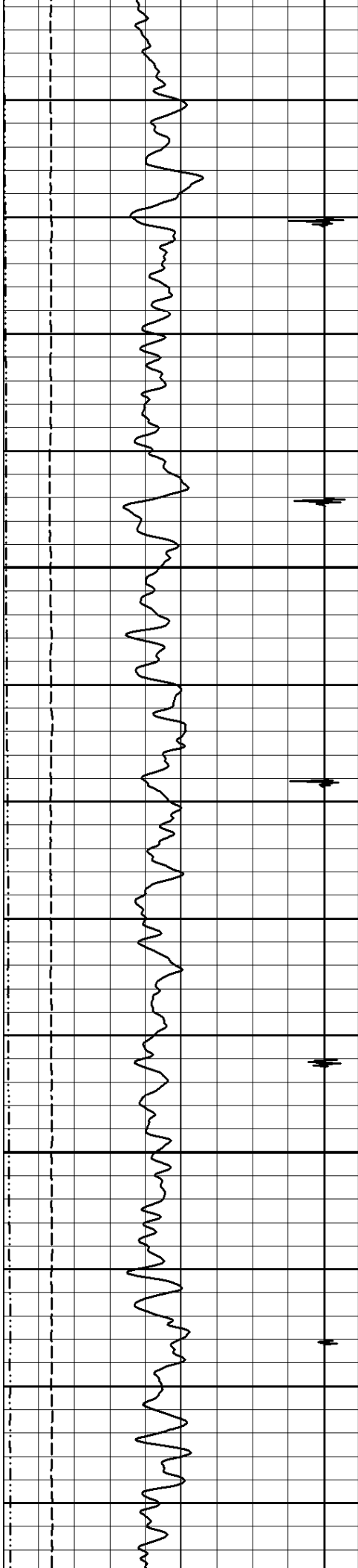
50

75

100

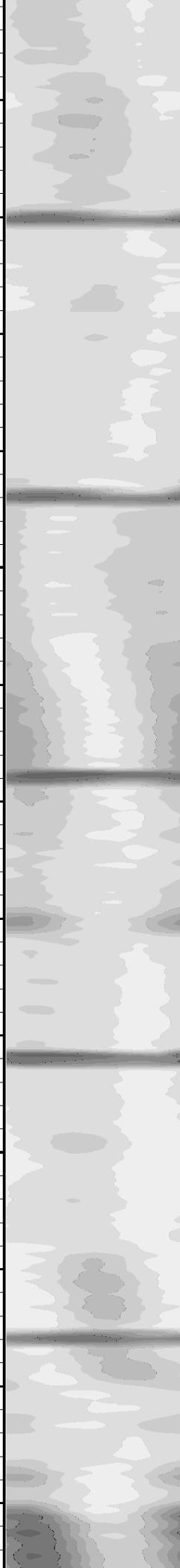
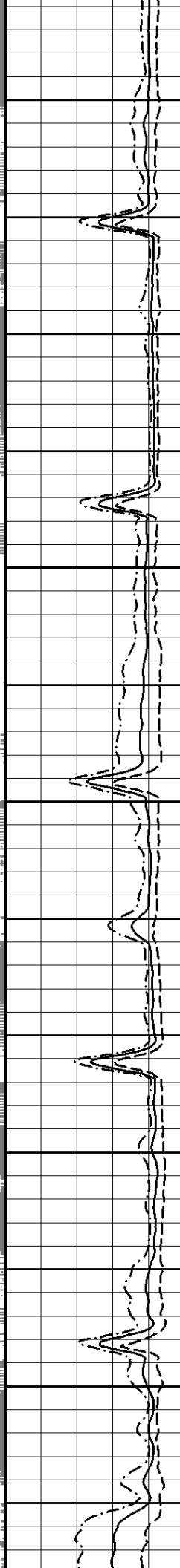
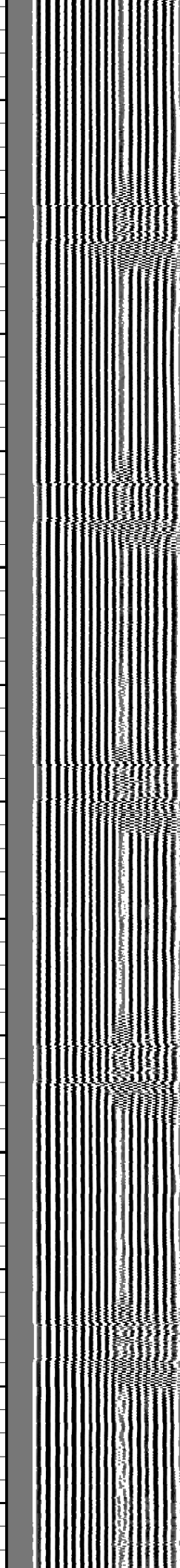
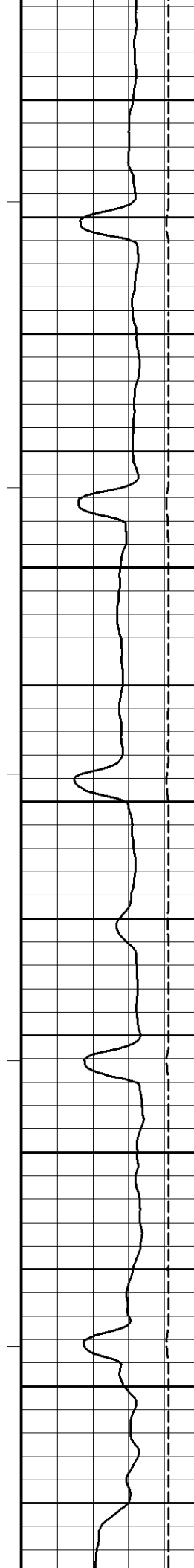


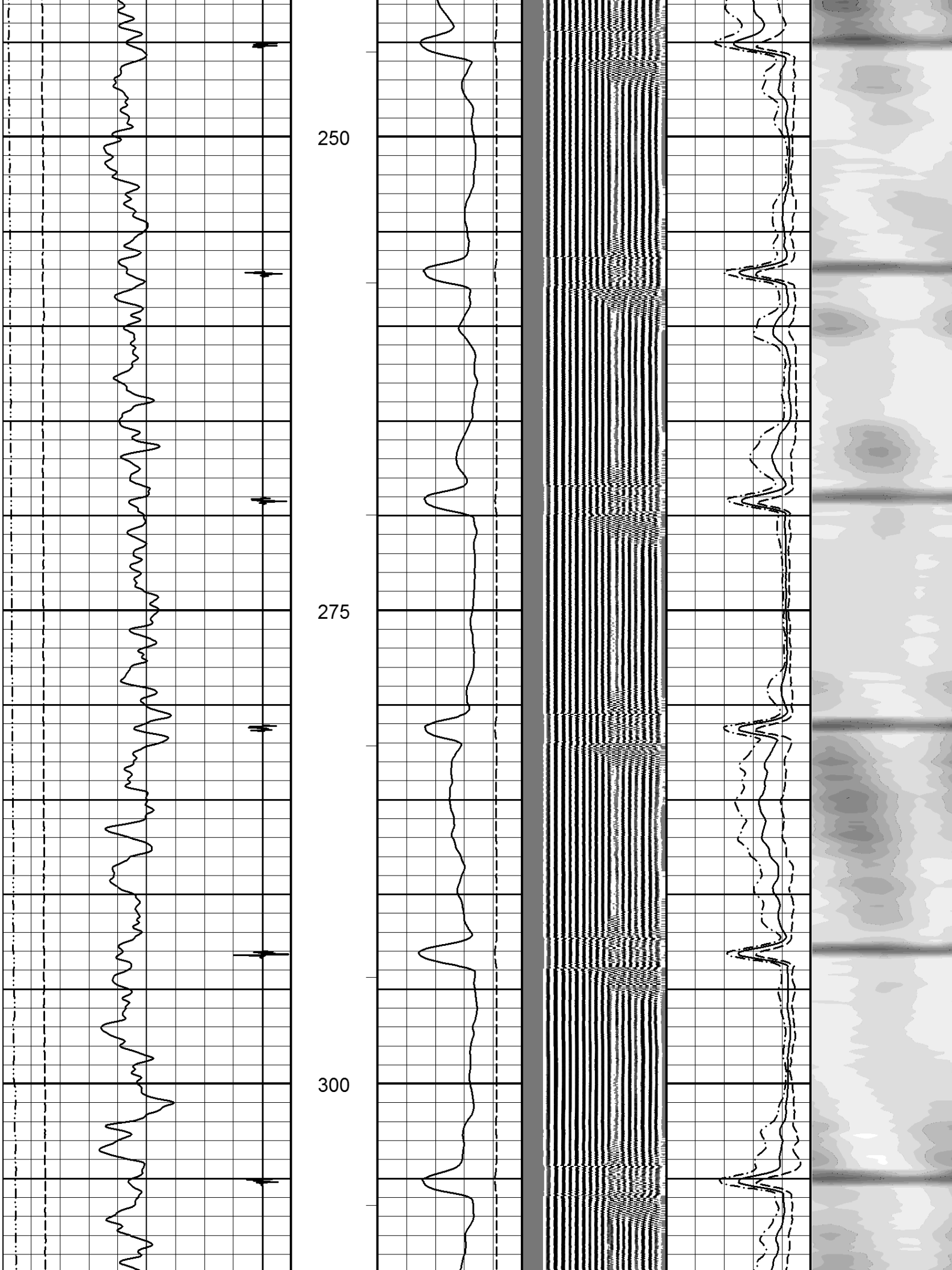


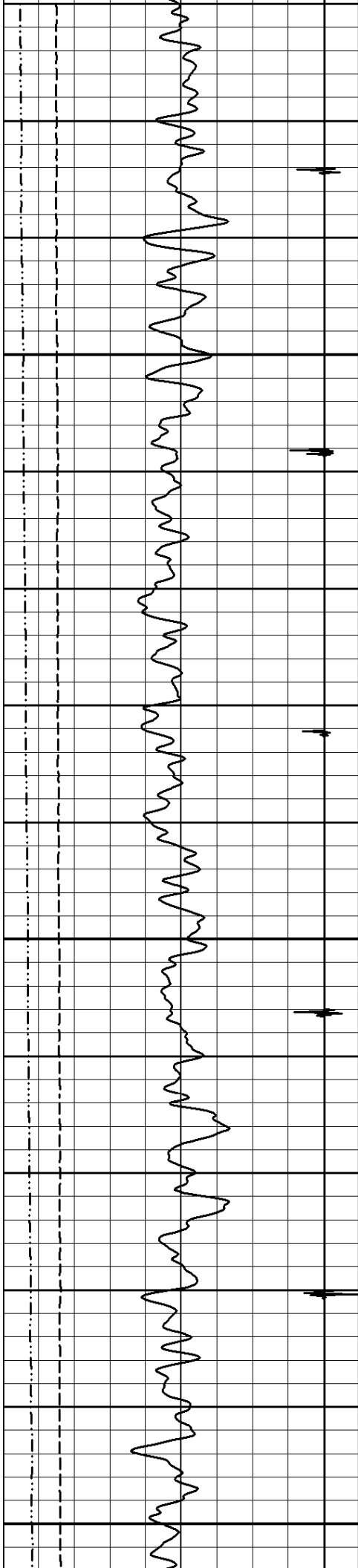


200

225



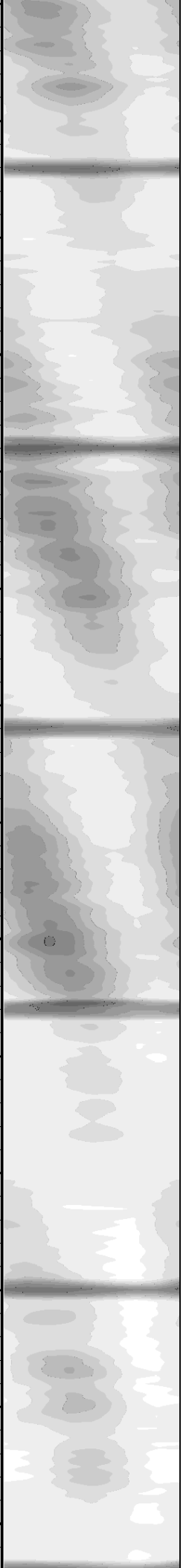
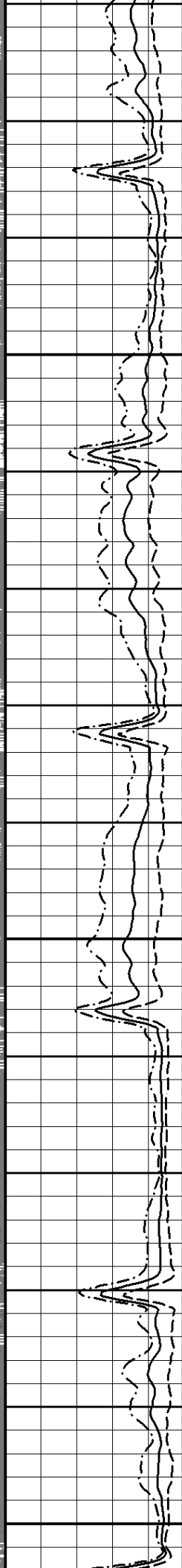
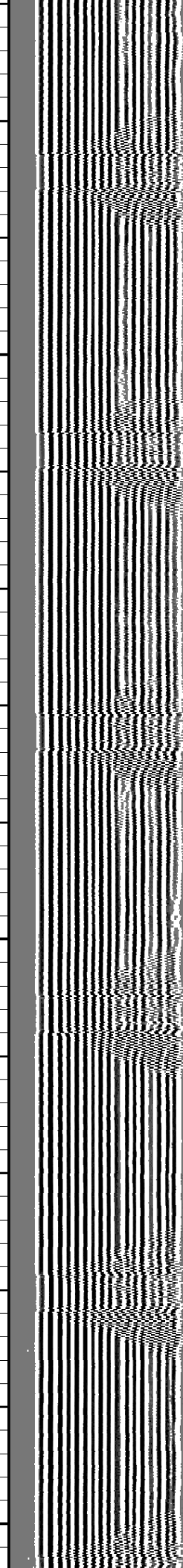
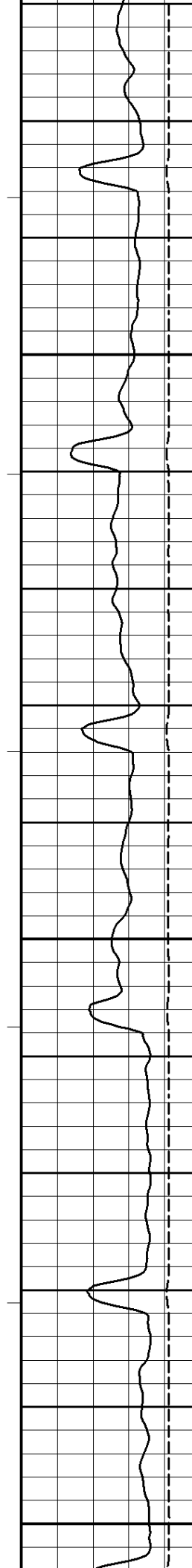


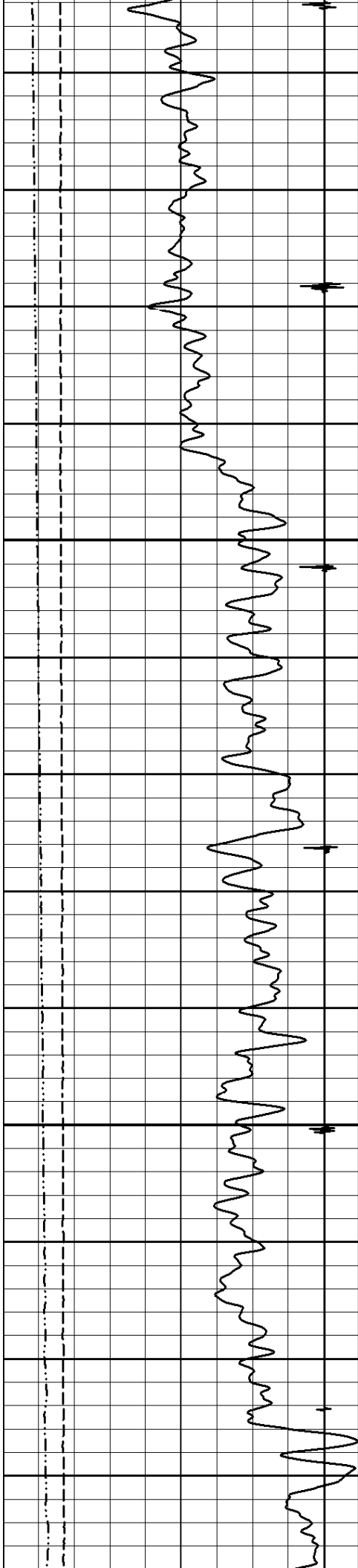


325

350

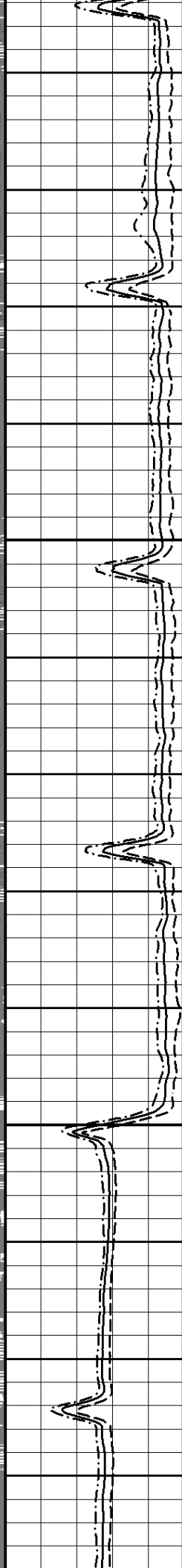
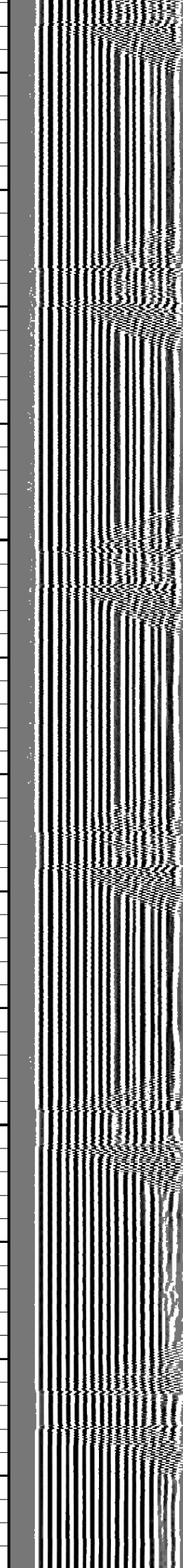
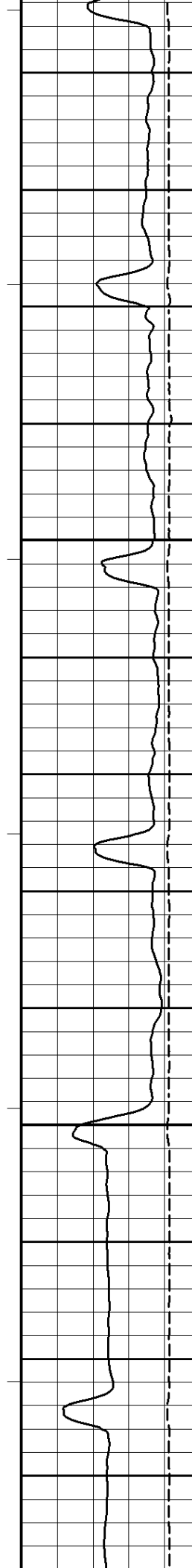
375

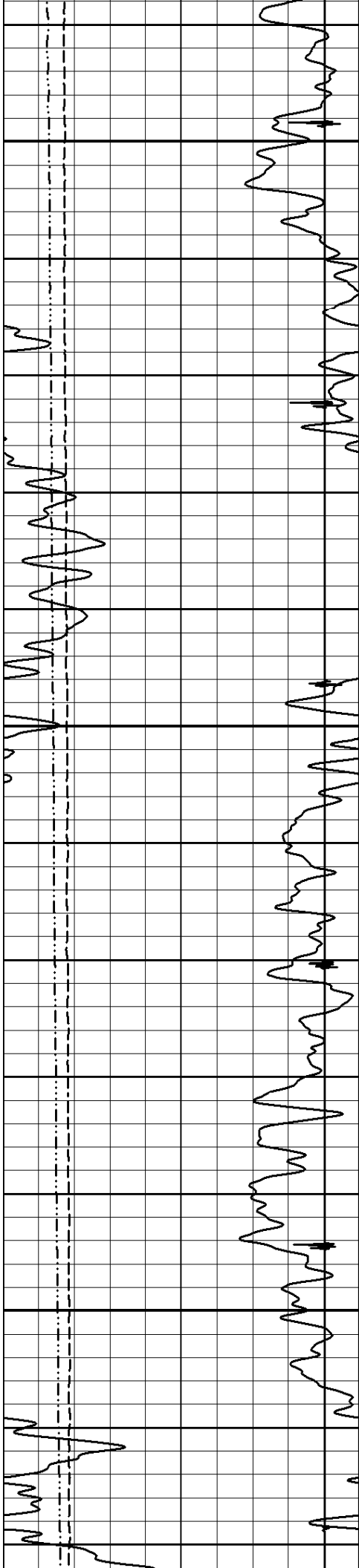




400

425

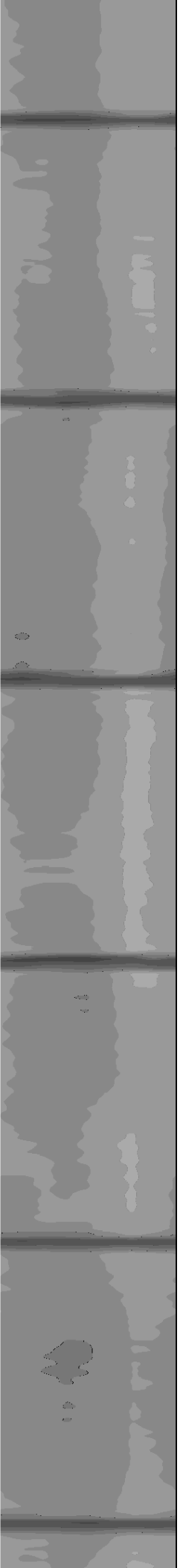
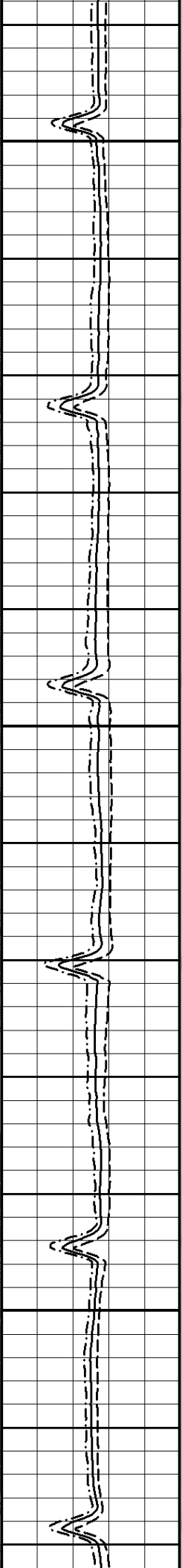
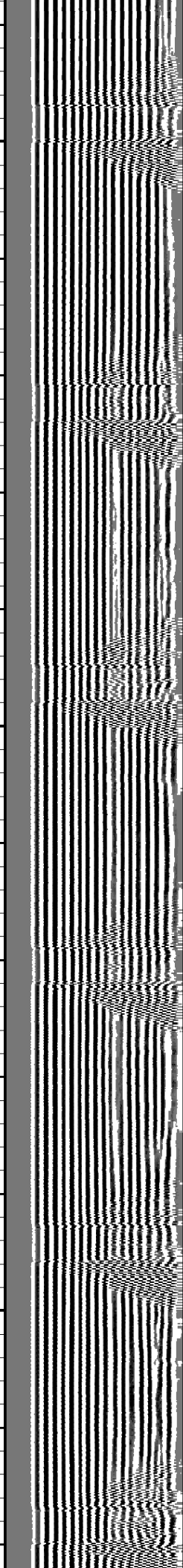
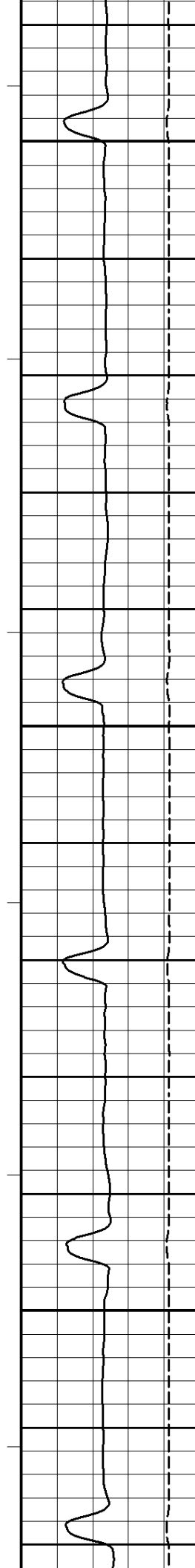


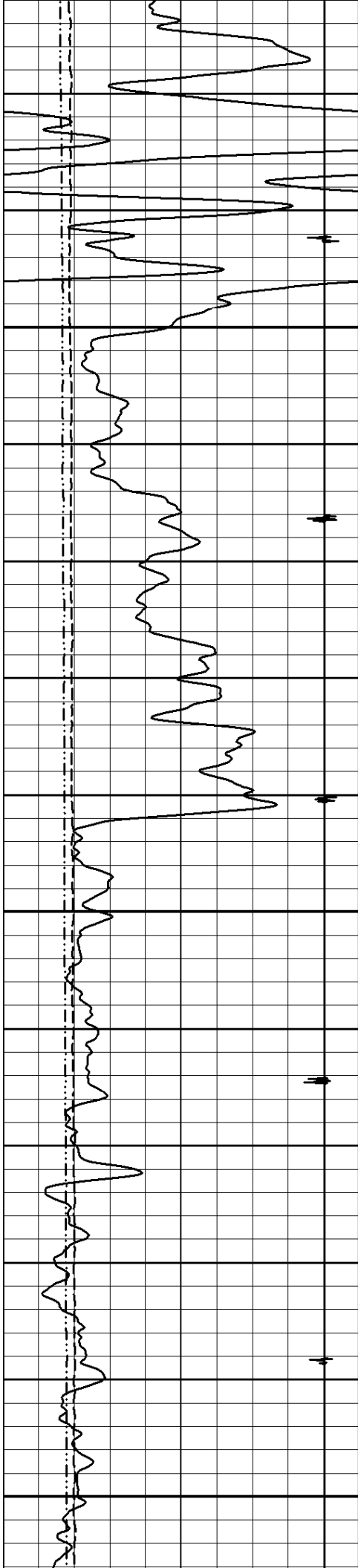


450

475

500

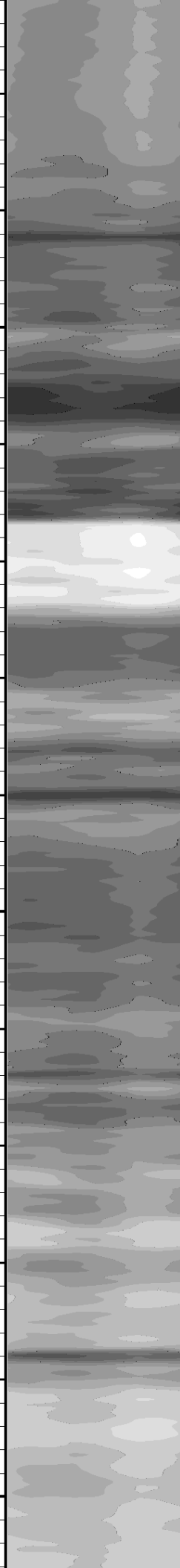
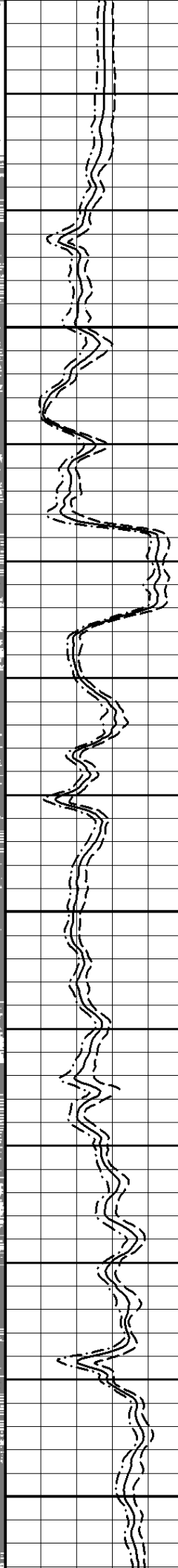
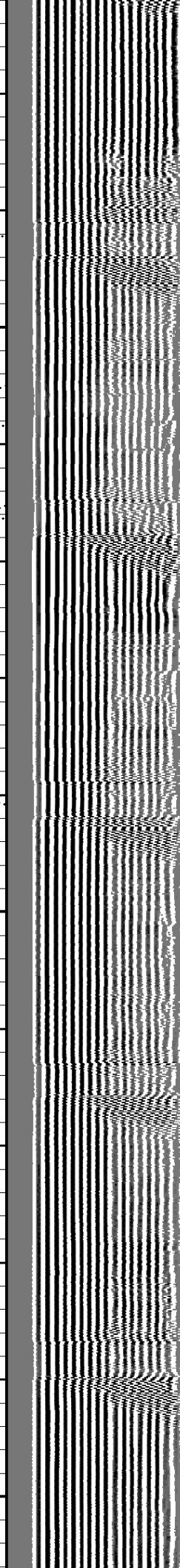
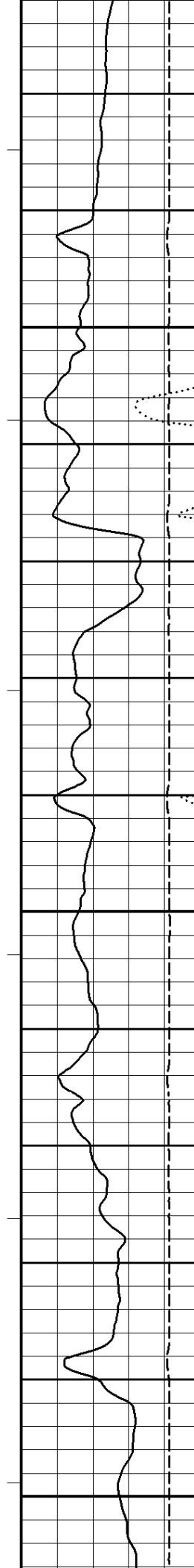


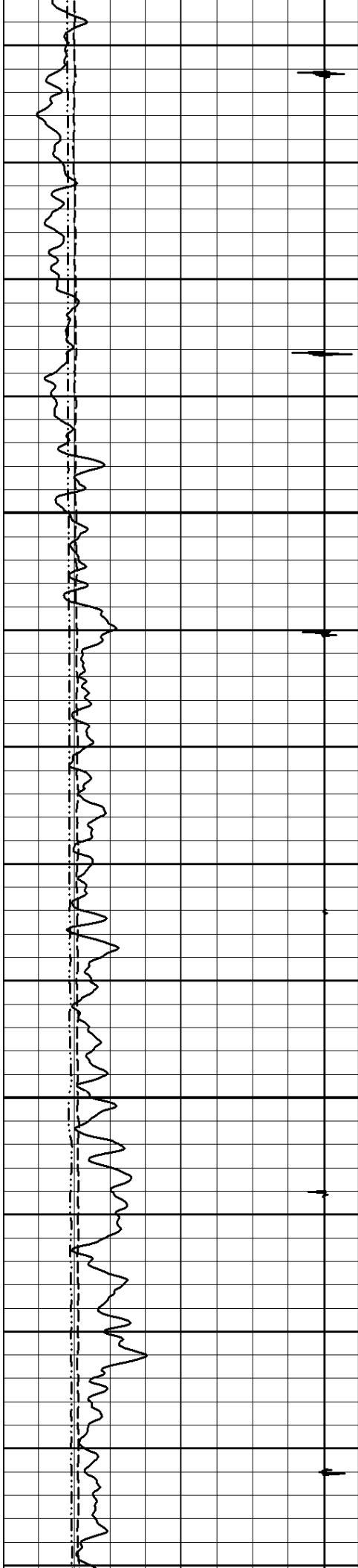


525

550

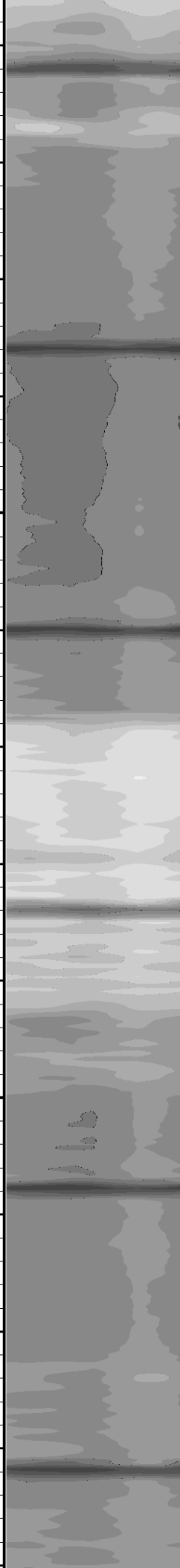
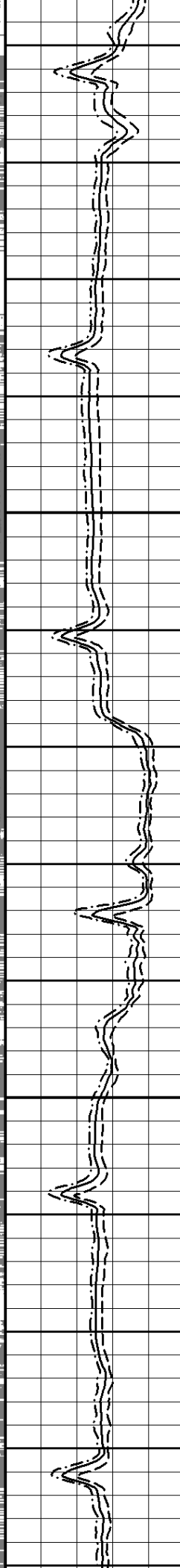
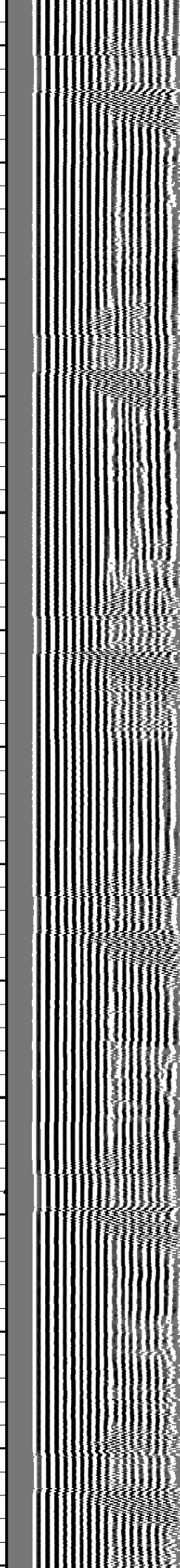
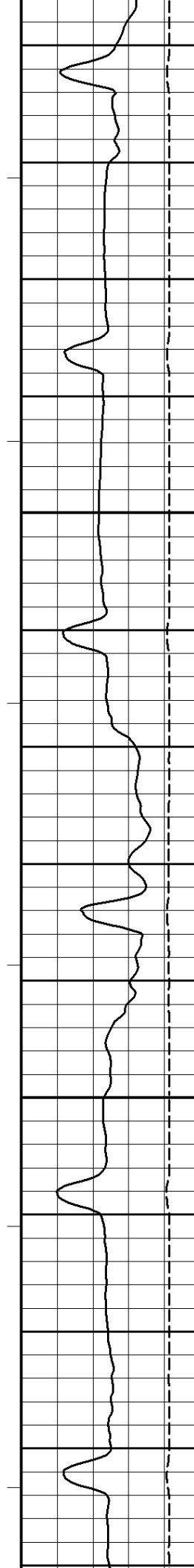
575

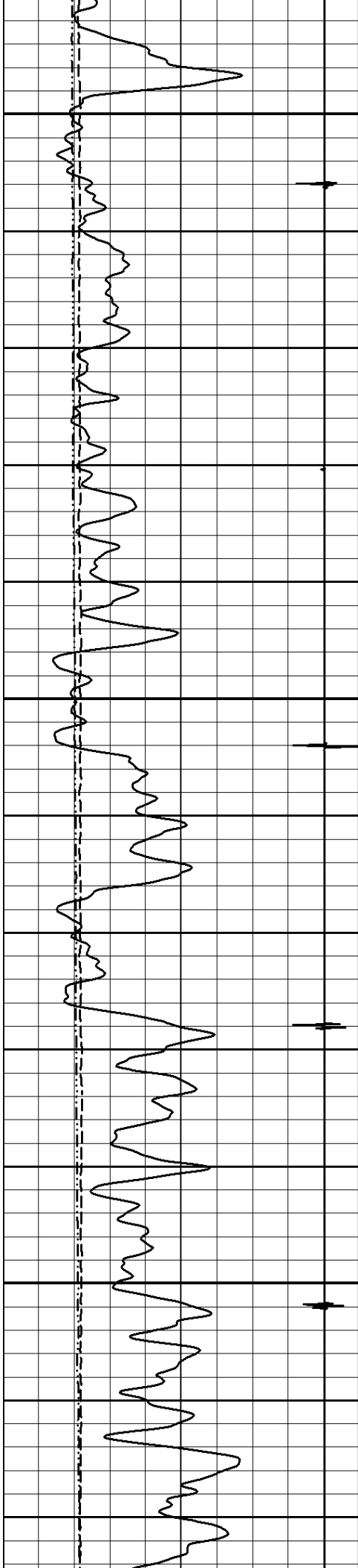




600

625

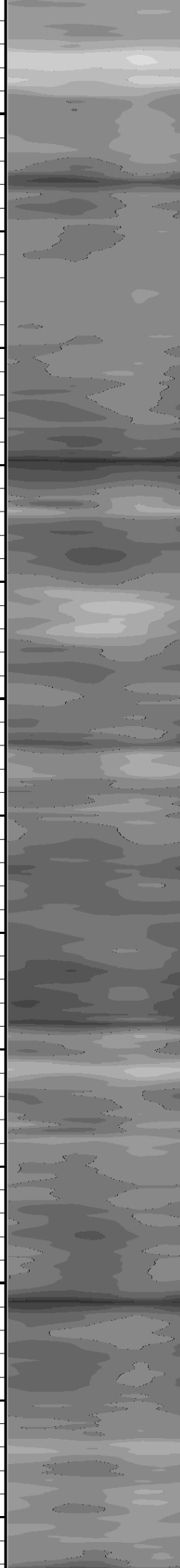
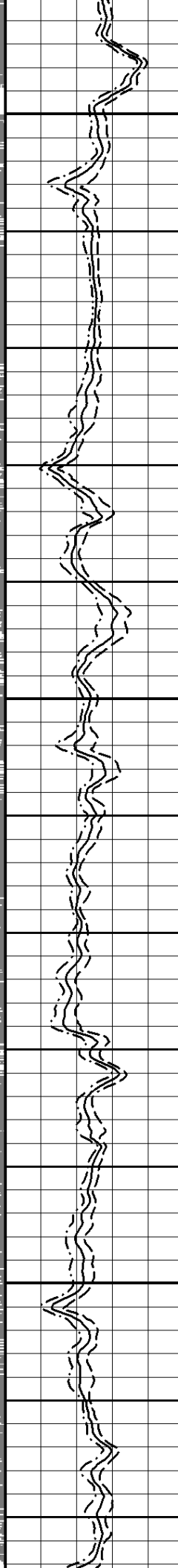
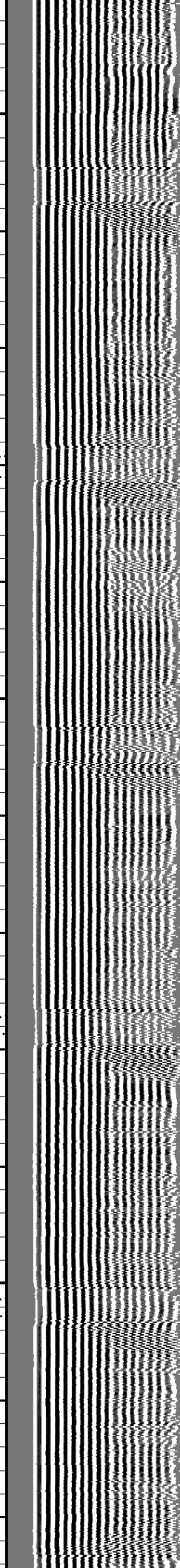
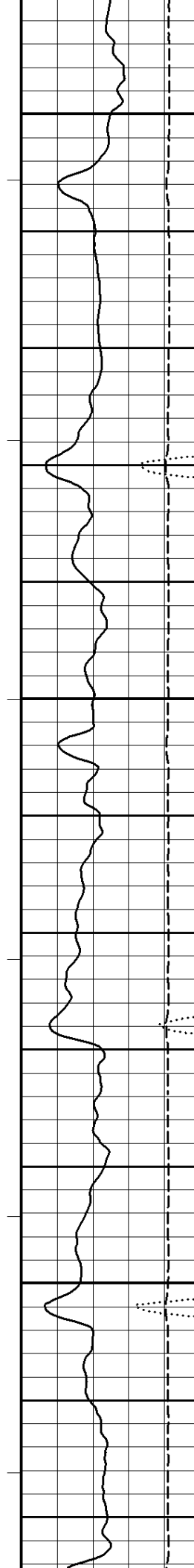


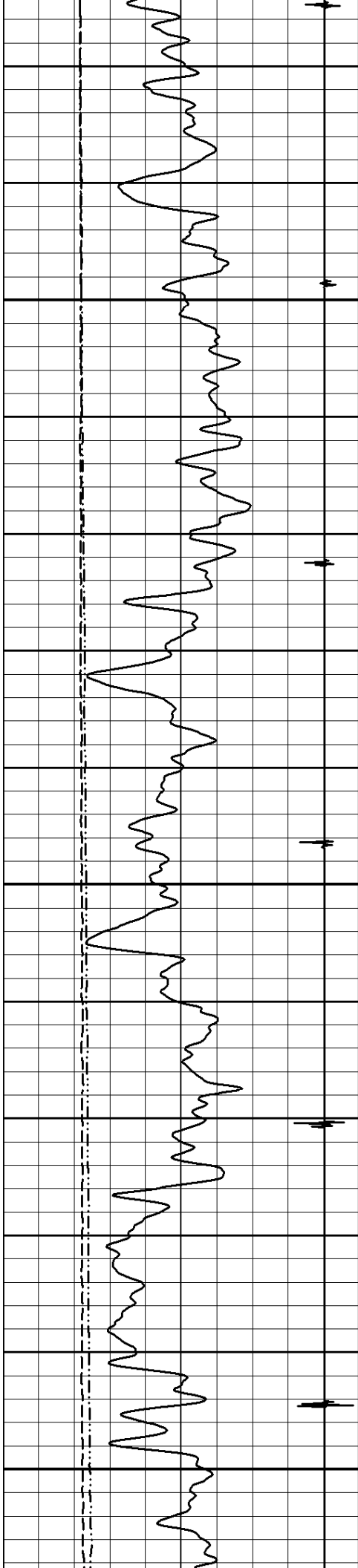


650

675

700

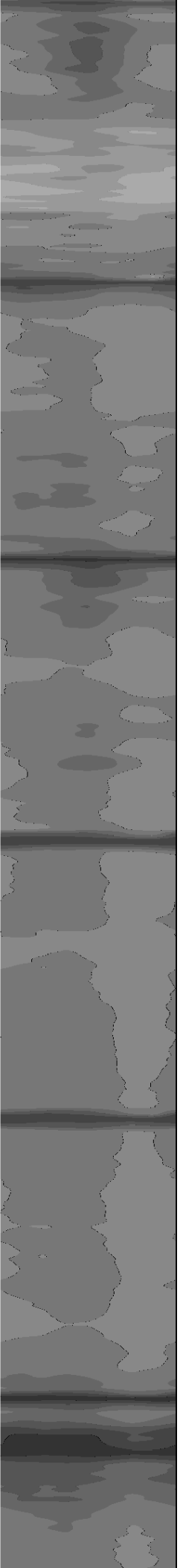
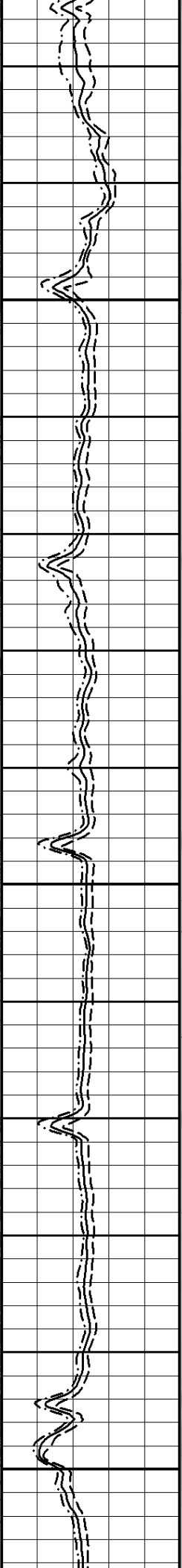
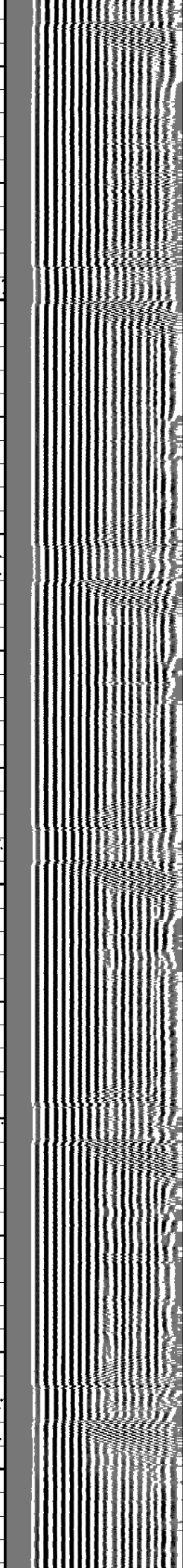
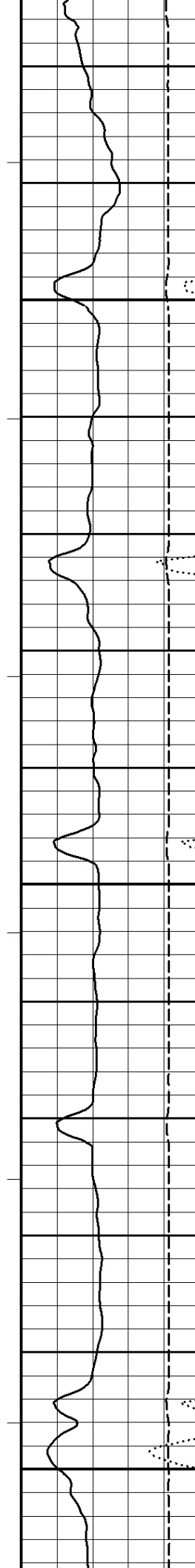


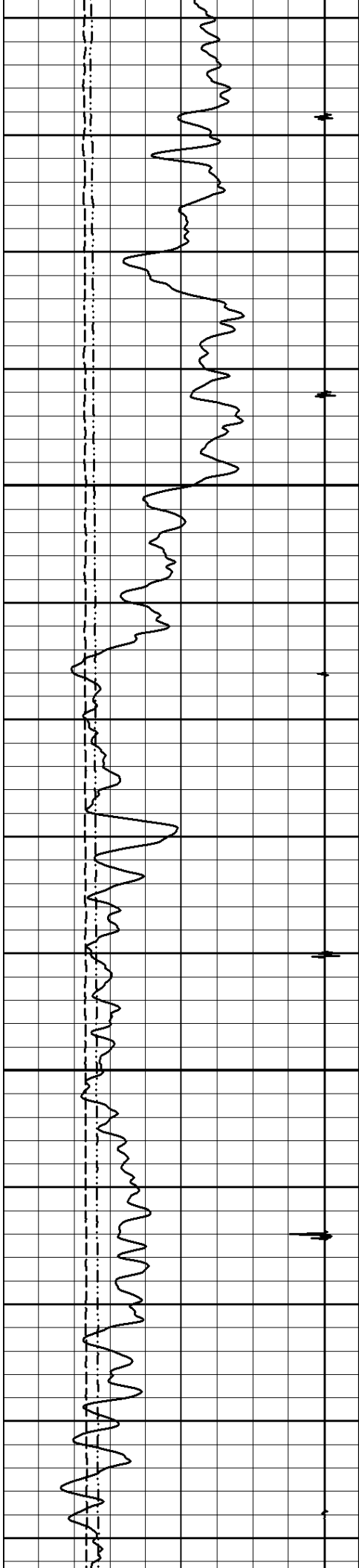


725

750

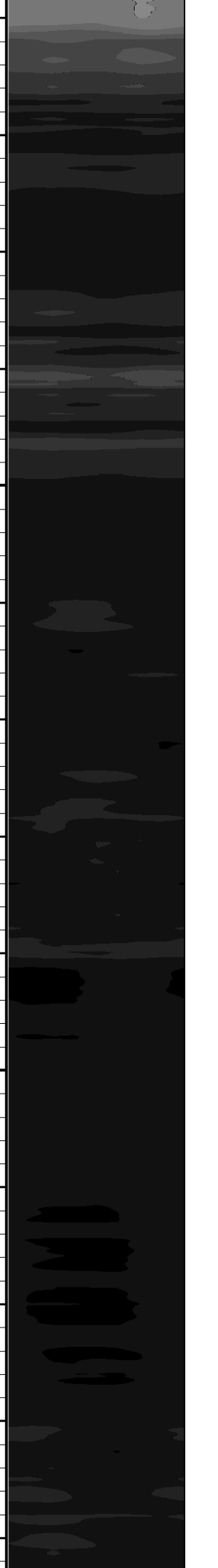
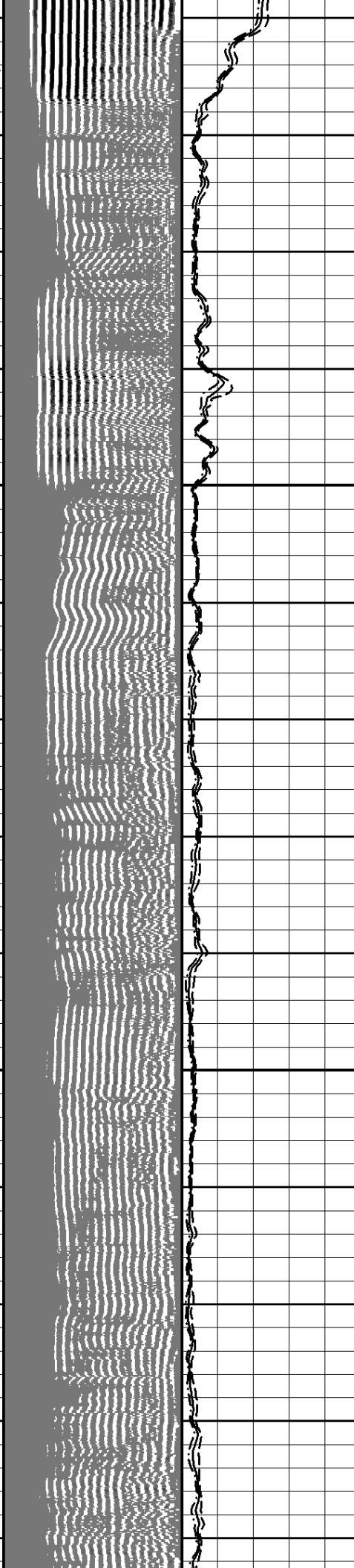
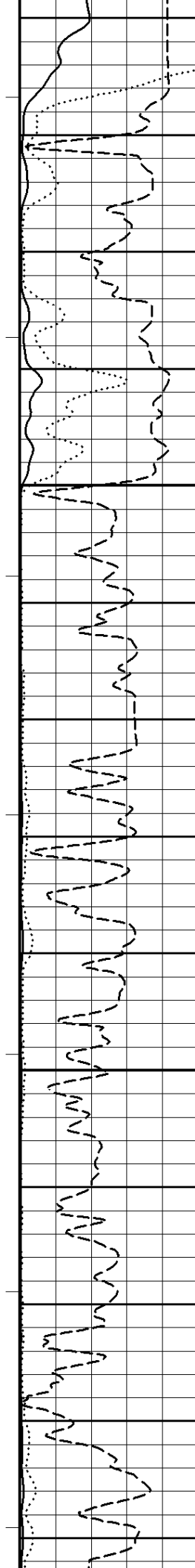
775

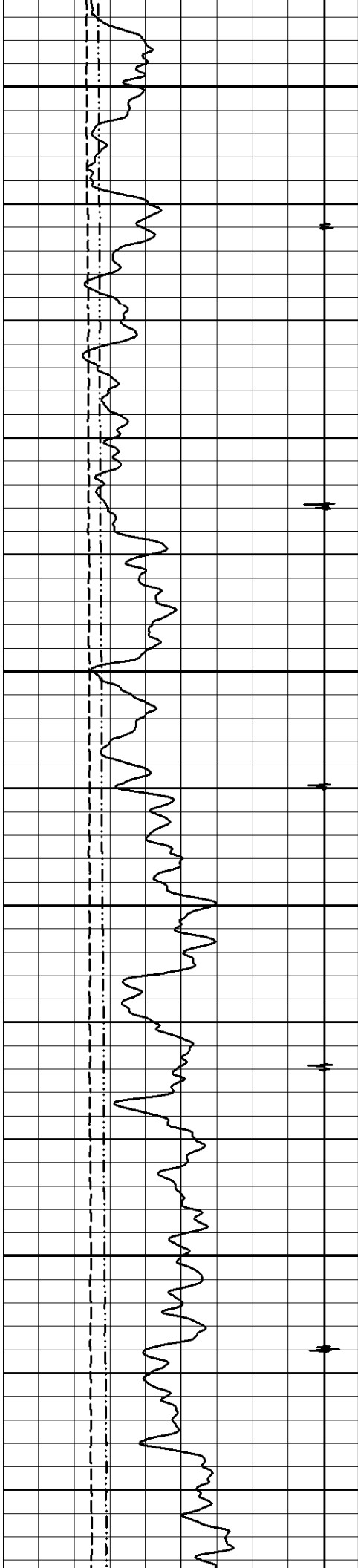




800

825

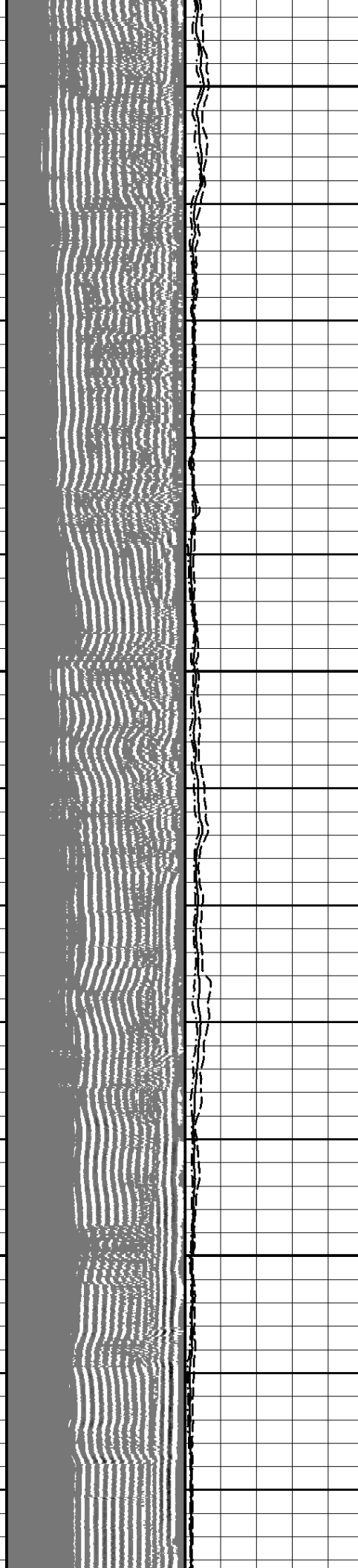
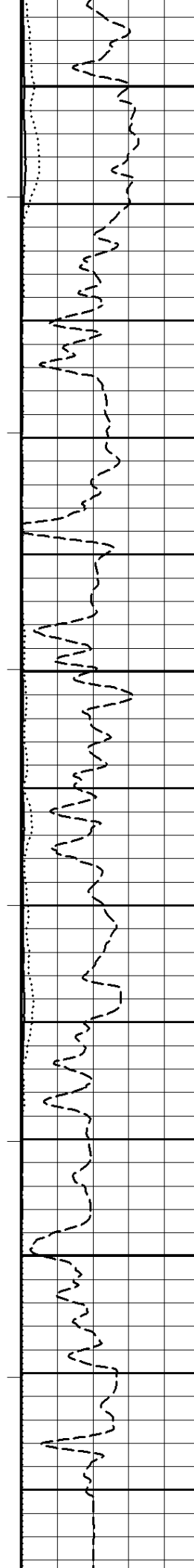


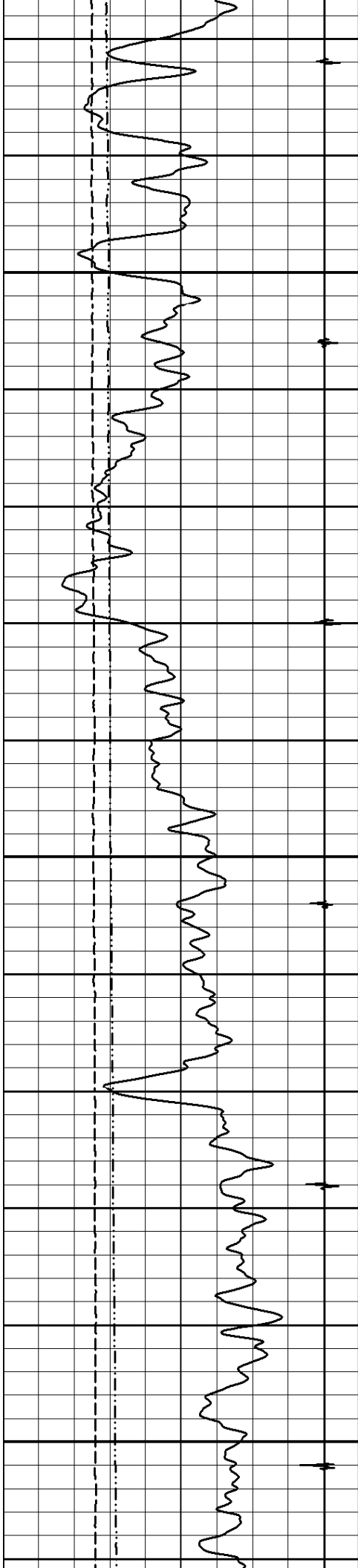


850

875

900

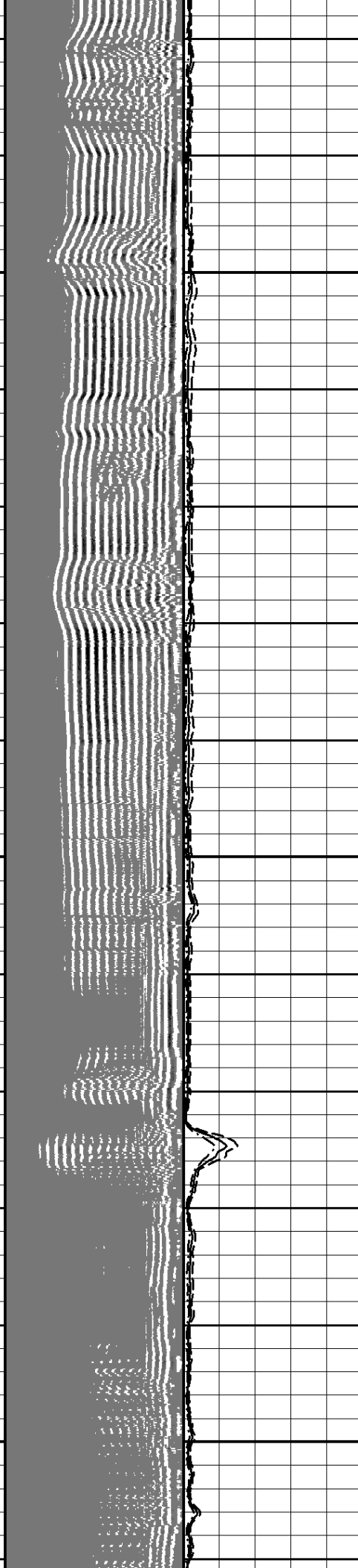
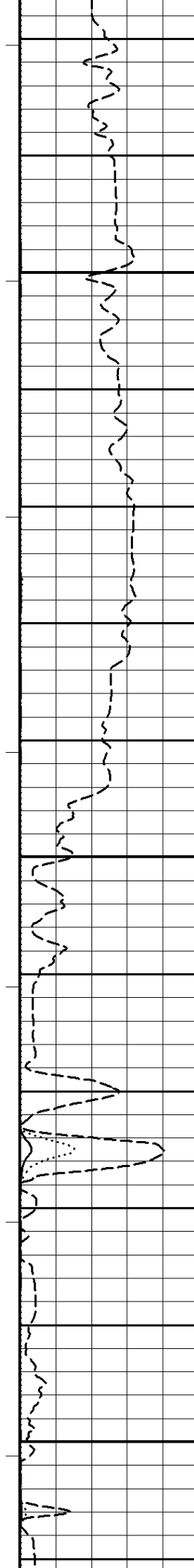


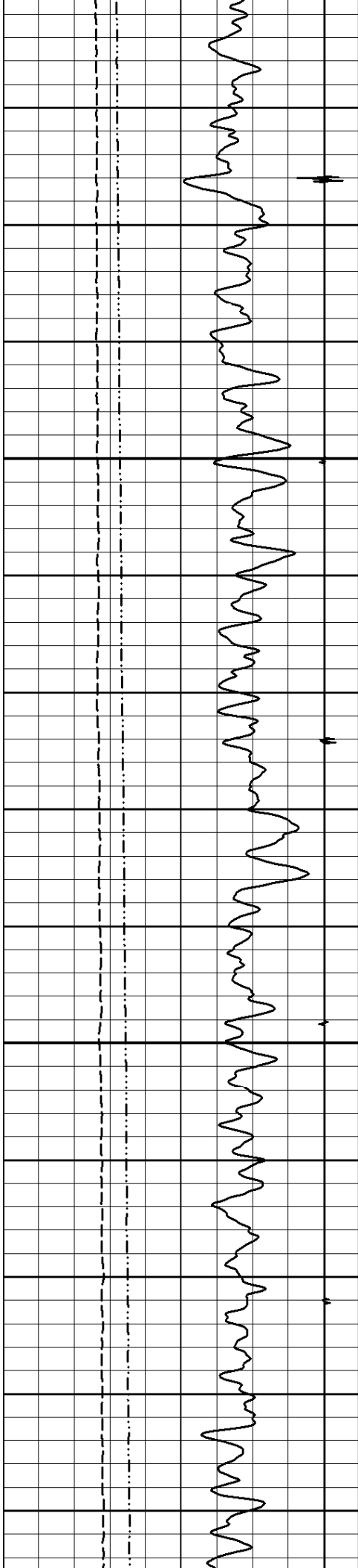


925

950

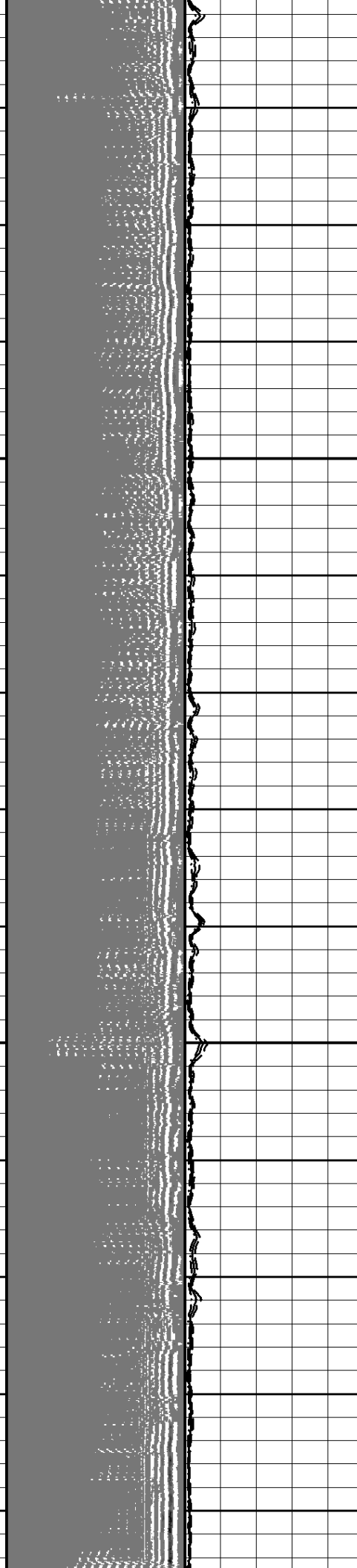
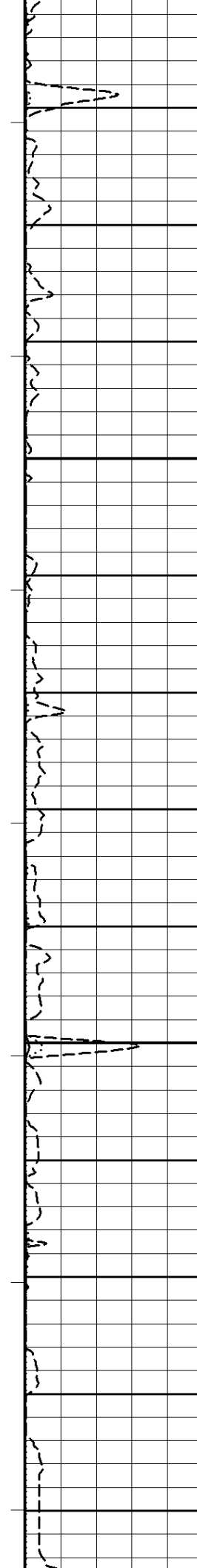
975

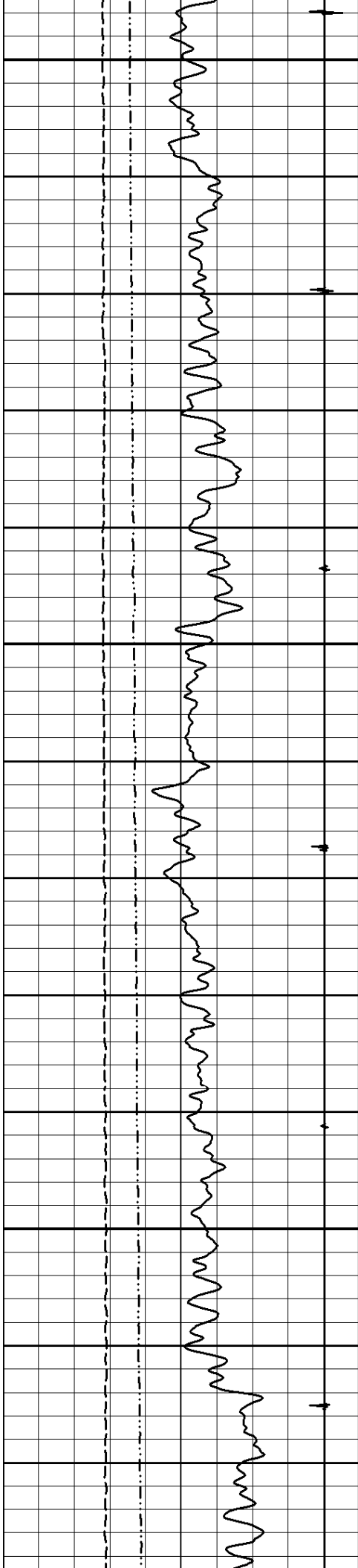




1000

1025

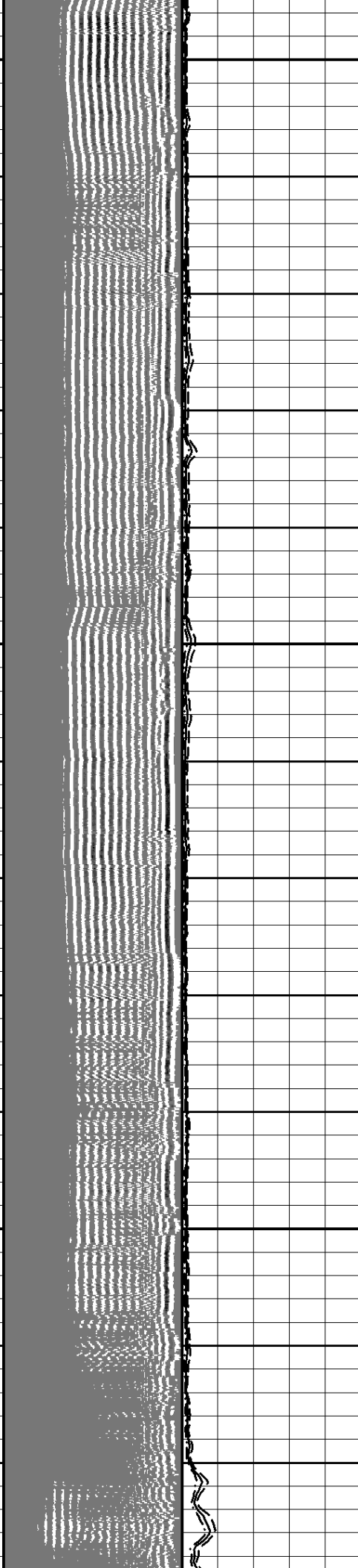
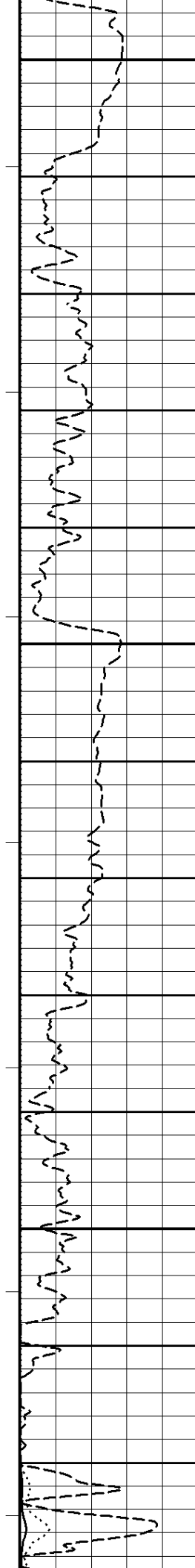


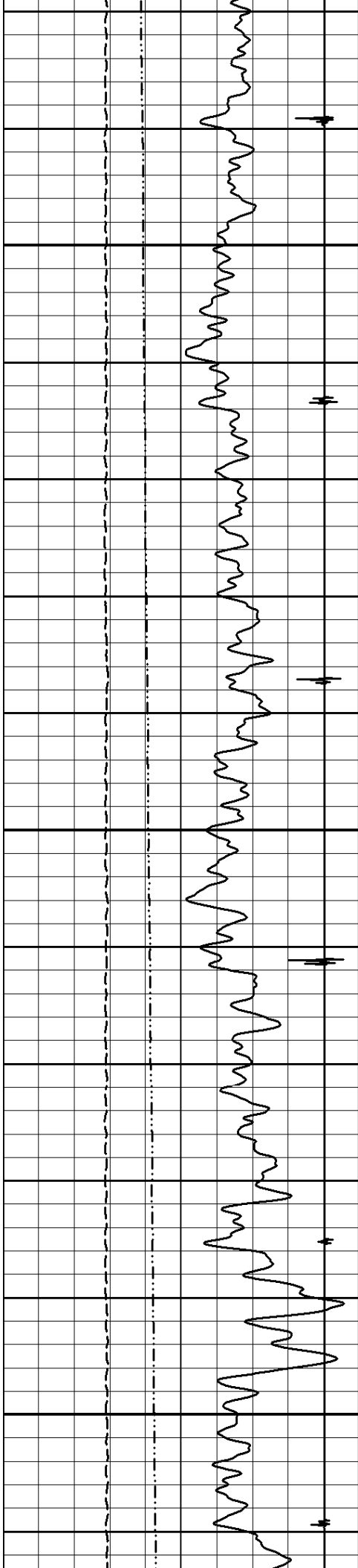


1050

1075

1100

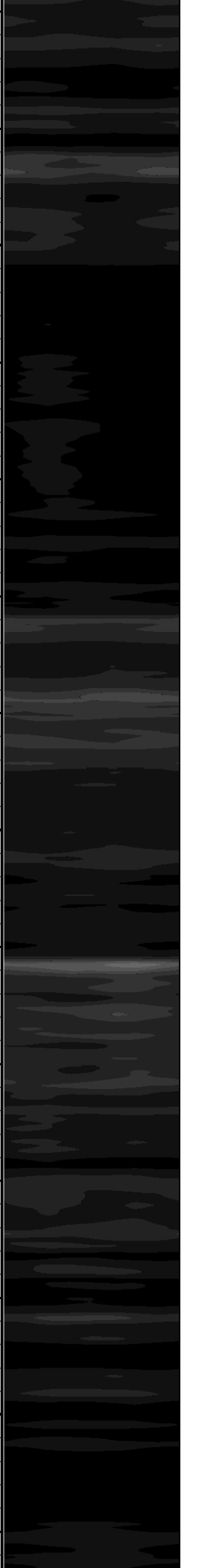
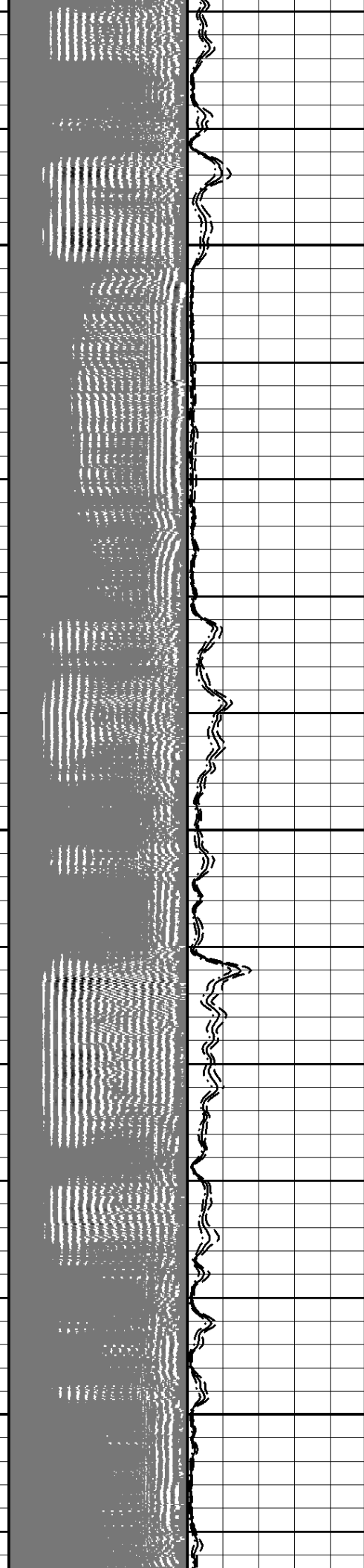
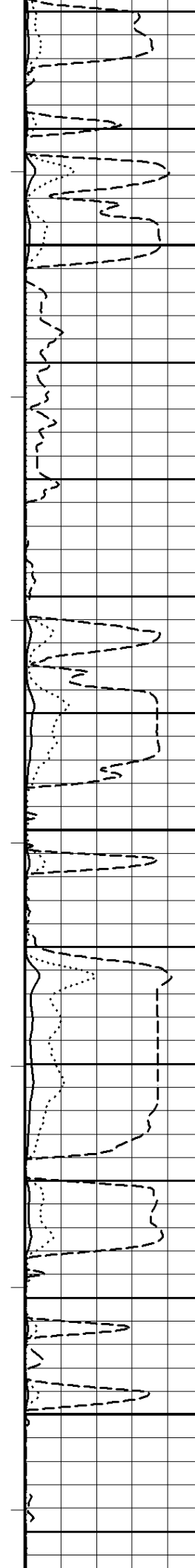


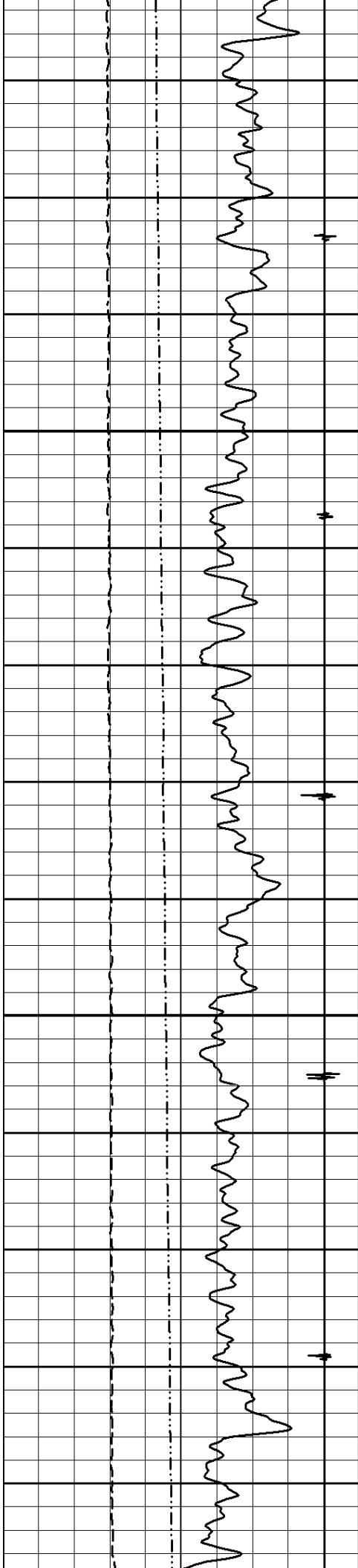


1125

1150

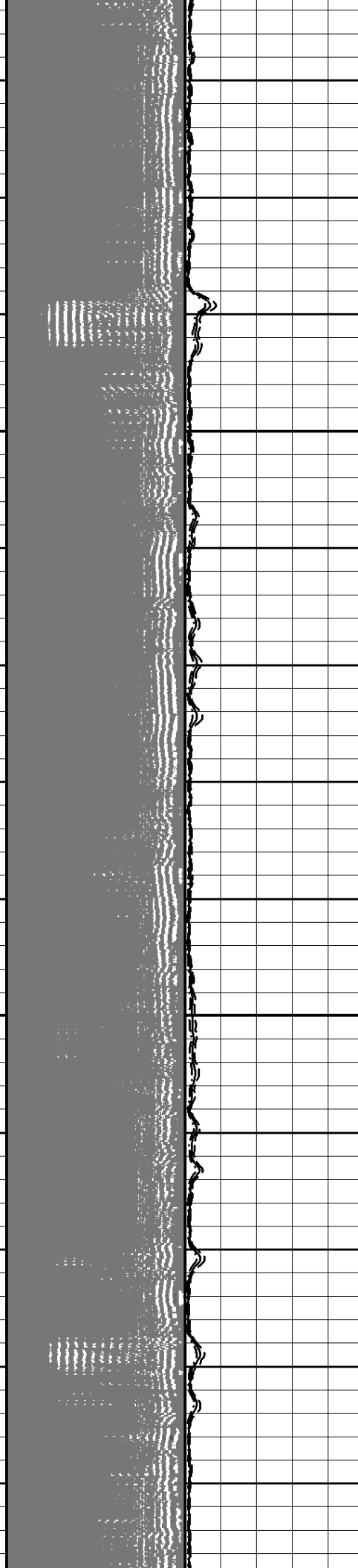
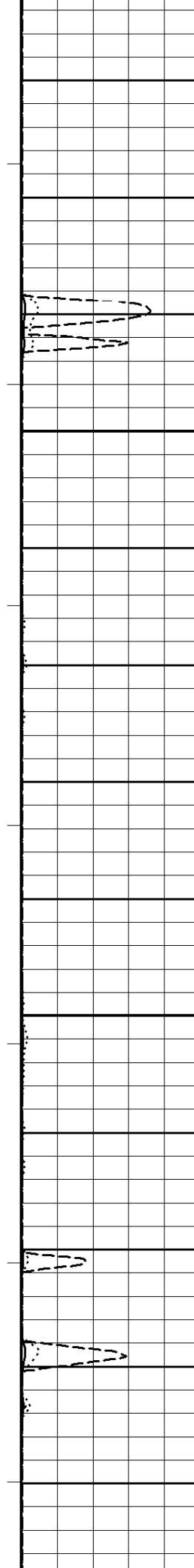
1175

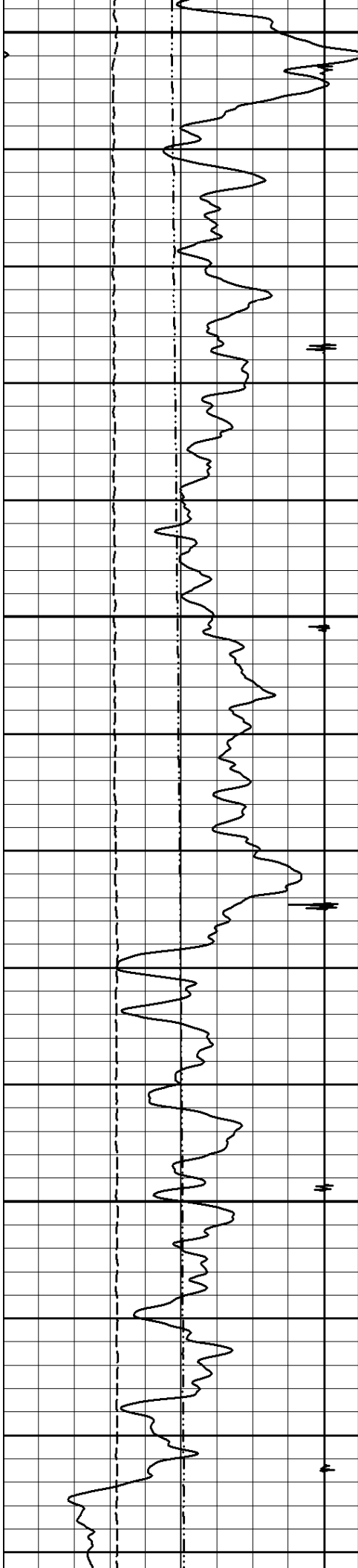




1200

1225

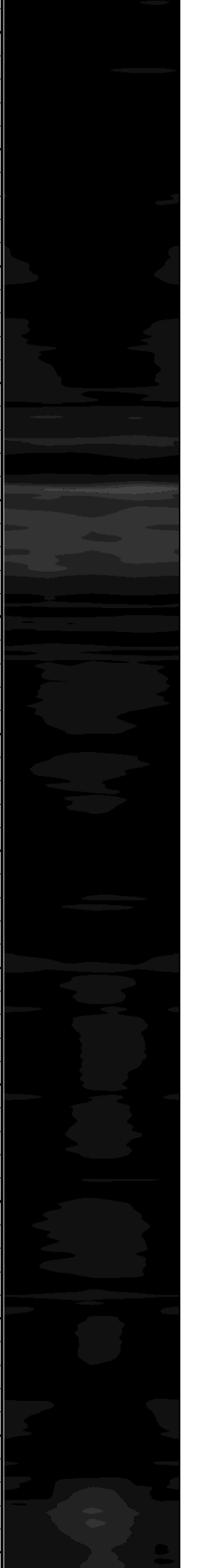
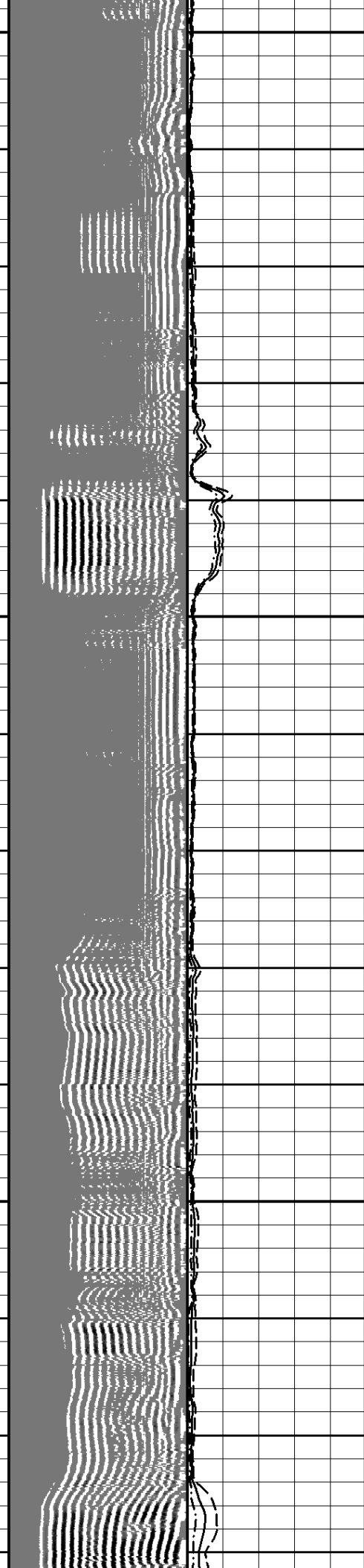
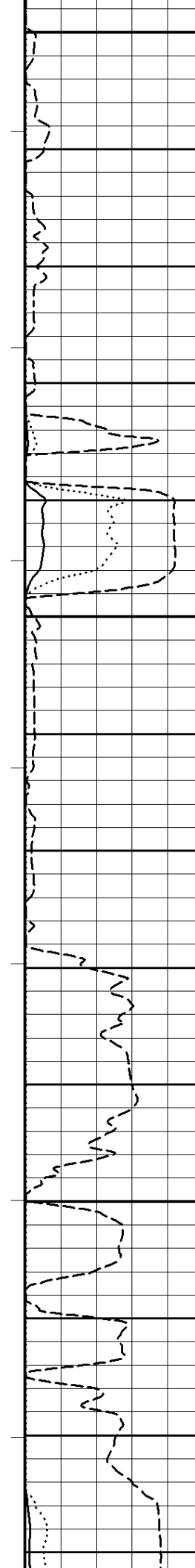


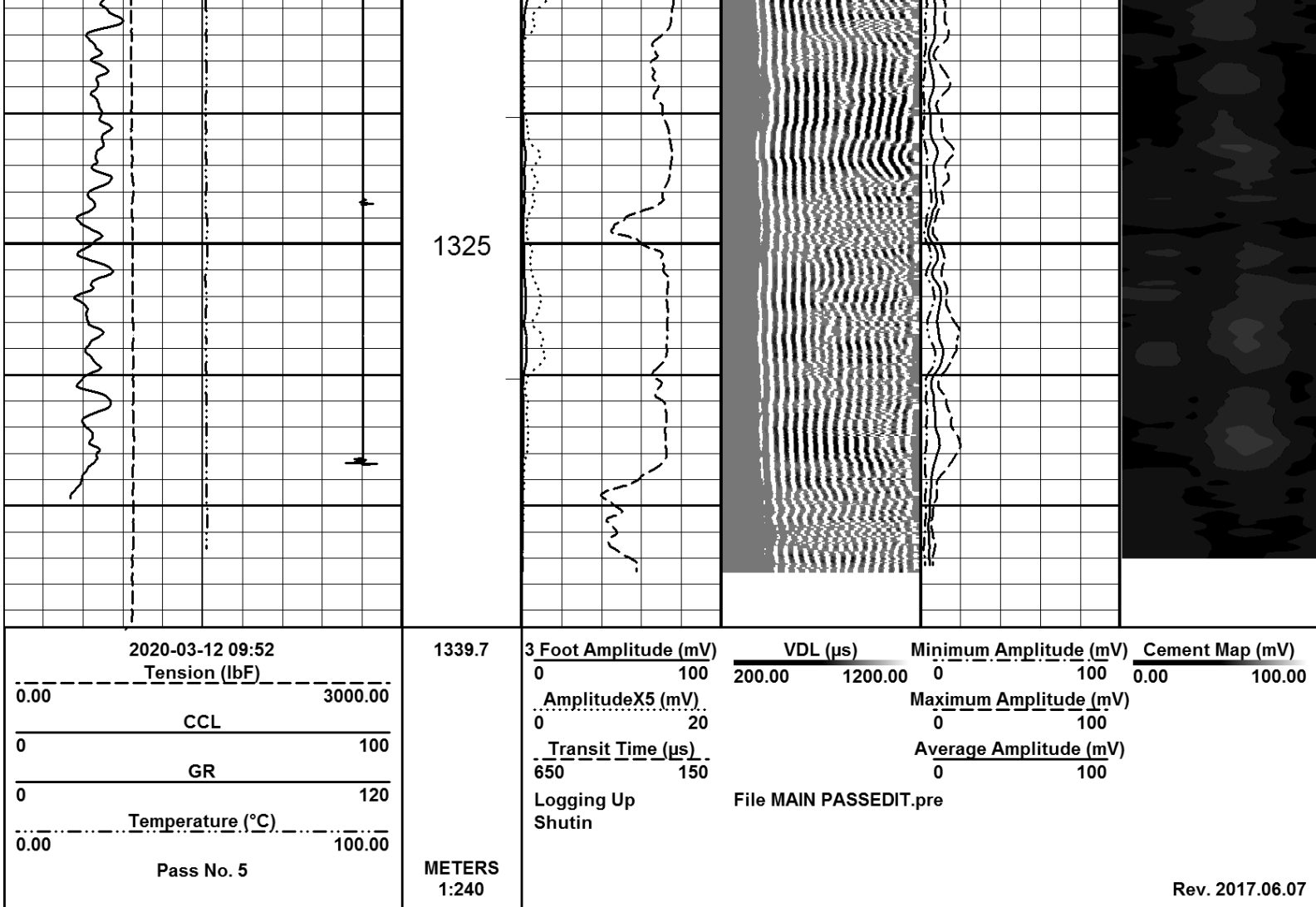


1250

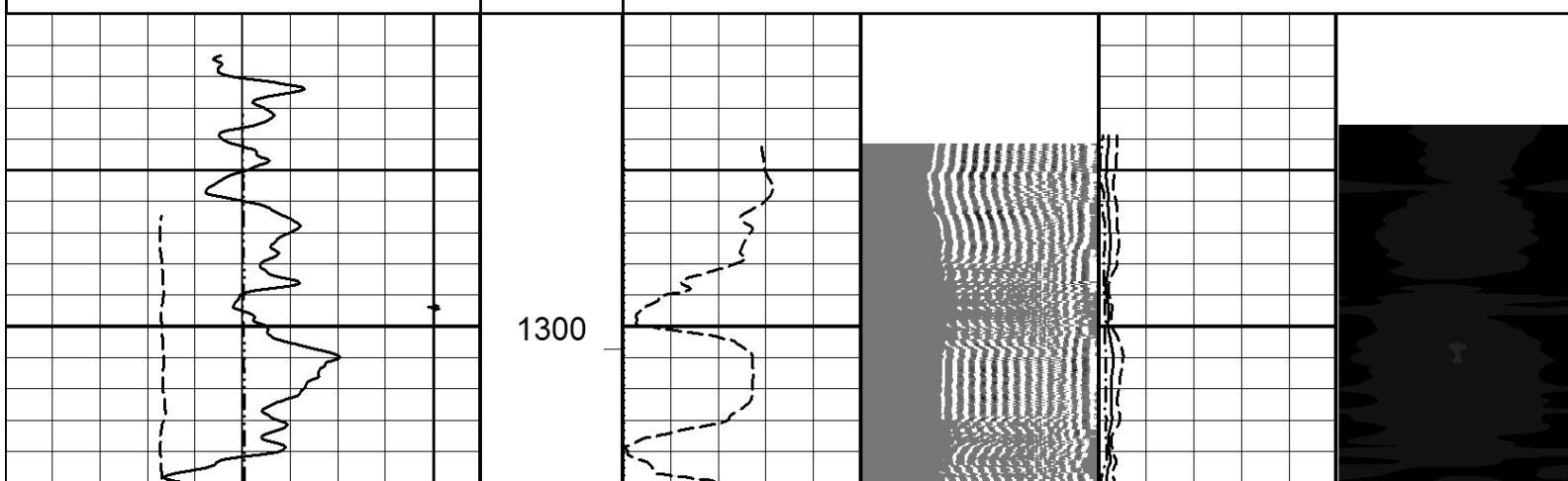
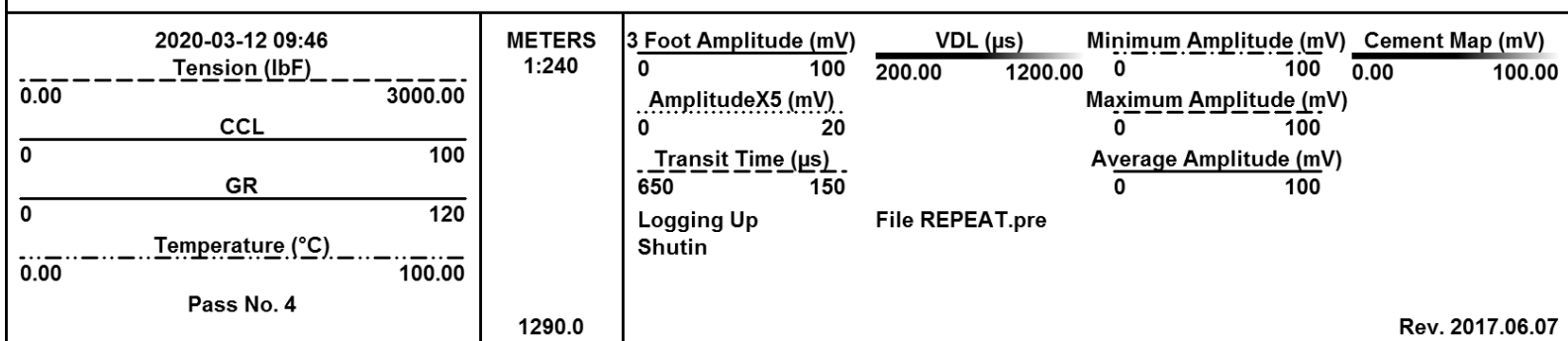
1275

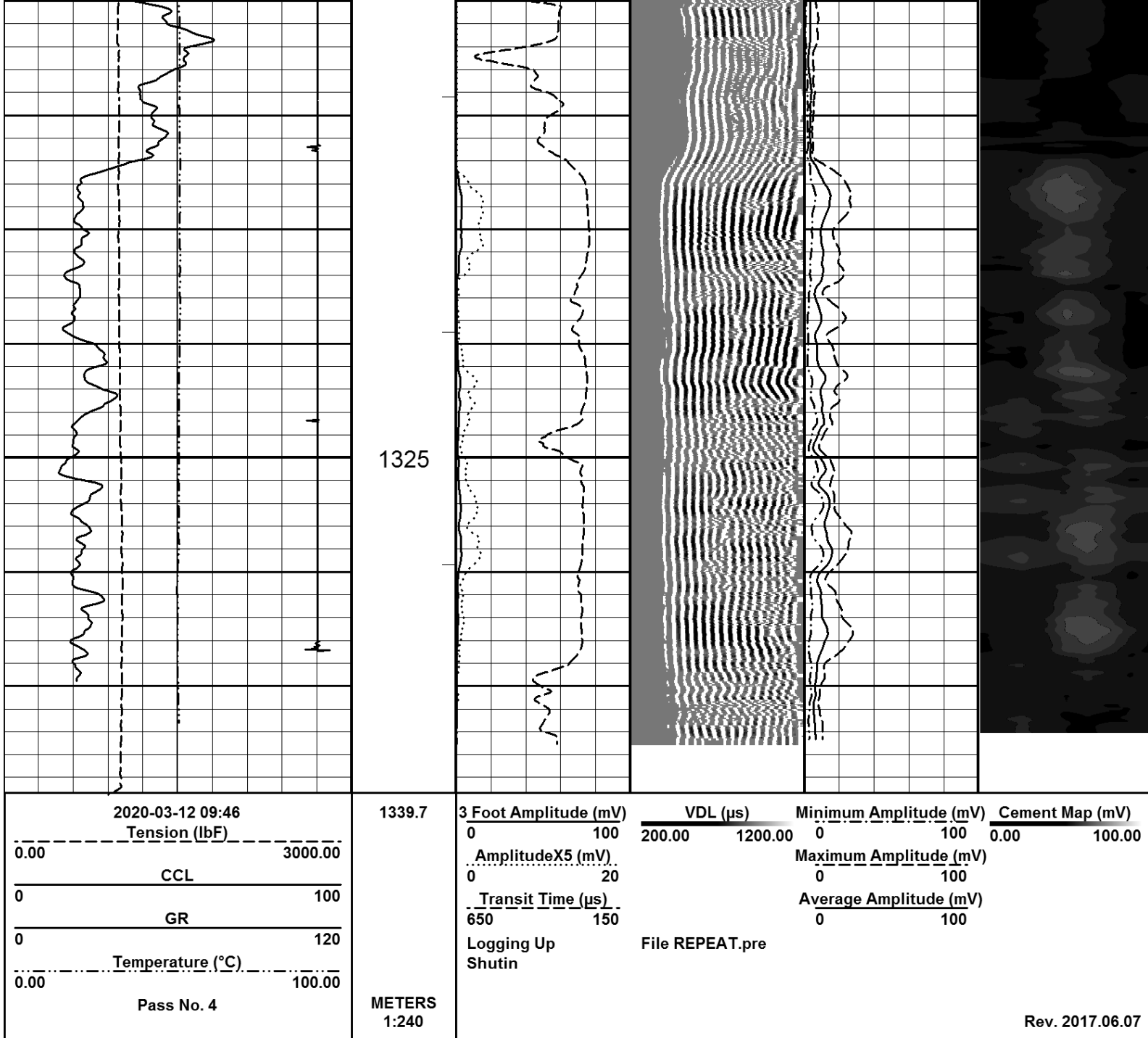
1300





REPEAT PASS @ 0mPA





Company ENERGY WORKS CANADA.

Well STRATEGIC HB ET AL CAMERON J-62 60 10N 117 1

Field CAMERON HILLS

Province NWT

LSD. SEC. TWP. RGE. W.